



Adelphi • Cabaret • Florence Chair

user guide



adelphi

cabaret

florence

The Cabaret, Florence and Adelphi chairs are multi-positional Level 4 Care Chairs which means they can be adjusted in many different ways to help find an individual position for the occupant to give comfort and support.

The following features and adjustment descriptions give a simple guide to using the Cabaret Care Chair, and similar chairs such as the Florence and the Adelphi which use the same frames.

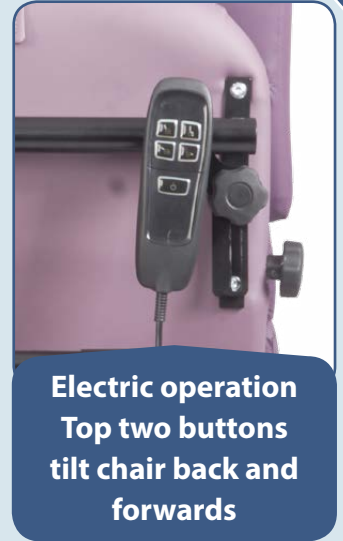
Contents

- 1** Tilt in Space. Electric or Manual
- 2** Leg Rest Operation. Electric or Manual
- 3** Back Angle Recline (B.A.R.) Electric or Manual
- 4** Articulating Back
- 5** Footplate Height Adjustment and Removal
- 6** Footplate Angle Adjustment
- 7** Footplate Fold Away
- 8** Arm Removal
- 9** Arm Height Adjustment
- 10** Seat Width Adjustment
- 11** Removable Seat Cushion Module
- 12** Seat Depth Adjustment and Locking
- 13** Thoracic Width, Angle and Height Adjustment
- 14** Wing Adjustment
- 15** Rear Castor Braking
- 16** Back Cushion Adjustment
- 17** Battery Charging

1. Tilt in Space



Manual operation
Pull lever and tilt chair



Electric operation
Top two buttons
tilt chair back and
forwards

2. Leg Rest Operation



Manual Leg rest operation is a two handed operation. The release trigger must be squeezed as the leg rest is pulled outwards to extend it.

Electric operation of the leg rest is with the two lower buttons on the handset

3. Back Angle Recline

Manual Back Angle Recline is the lever on the left of the handle and this needs to be squeezed to enable manually moving the backrest to a more reclined or upright position.



4. Articulating Back



There are two knobs on the back of the chair which allow the carer to change the angle of the upper part of the backrest to give more head support or allow for a kyphotic curvature of the spine.



5. Footplate Height Adjustment and Removal

To adjust the height of the footplate the index plunger pins on both sides need to be pulled out and the footplate can be positioned higher or lower in line with the next set of holes.

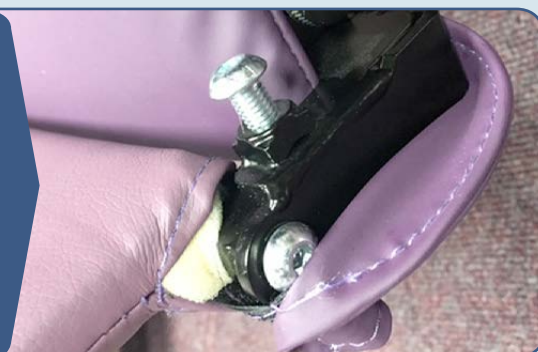


Footplate removal requires two hands to pull each of the index plungers out and then slide the footplate off the leg rest mechanism.



6. Footplate Angle Adjustment

The angle of the footplate can be adjusted using the chromed dome bolts highlighted. It is possible to adjust the angle from -10 degrees to +20 degrees

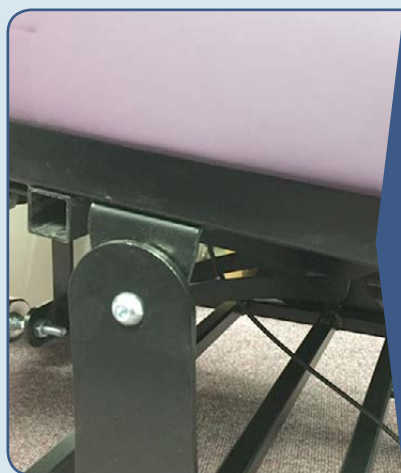


7. Footplate Fold Away

The footplate can be stored behind the leg rest. The leg rest needs to be pulled out fully before folding the footplate behind it.



8. Arm Removal



The arms are removable and / or adjustable for seat width. Each arm is supported on two square tubes which slide within two other square tubes.

Each tube has a locking knob which should be tightened fully to secure the arm.

9. Arm Height Adjustment



To adjust the height of the arms release both plunger pins simultaneously and move the arm to the desired height.

This is also easier to do with the whole arm removed.

10. Seat Width Adjustment

See section 8 above. The arms can be positioned to give adjustable seat width, but then both locking knobs on both sides of the chair should be tightened.



11. Removable Seat Cushion Module



The seat module can be removed to allow the addition of other seat foam/gel/air cushion systems.

The cushion casing is secured to the seat with Velcro.

12. Seat Depth Adjustment and Locking



The seat depth of the chair is adjusted by sliding the seat and leg rest carriage forwards or backwards. The seat is locked in place with the locking knob and it is easier to slide the seat by pushing/pulling on the handle.

13. Thoracic Supports Width, Angle and Height Adjustment

The thoracic supports are locked in place with the large external knob. The support tubes are also repositionable.

By loosening the large knob the thoracic support can be positioned wider or at a different angle to suit the client's needs.



14. Wing Adjustment

The optional wings are adjustable for width, angle and height in exactly the same way as described for the thoracic supports in section 13.



15. Rear Castor Breaking



The rear locking castor is locked in the attached photograph. This is easily done with the carer's foot operating the brake lever.

It is advisable to lock the castors whenever the client is in the chair in a stationary position.

16. Back Cushion Adjustment

The back cushions on the Cabaret are attached with Velcro and can easily be repositioned to suit the shape of the service user.

The narrower cushion is often removed to make it easier to use the full articulation of the upper back where the user has a more pronounced curvature of the spine.



17. Rechargeable Battery - Freedom Pack



Rechargeable Battery.

The charging lead can be easily disconnected from the supply to enable free movement of the chair. We recommend charging the battery at least weekly. A full charge should allow for at least 50 cycles of operation of the chair.

The charging transformer should be plugged in to a 240V socket.

primacare
Seating Experts in Assistive Technology



Certificate no:11186 ISO9001

tel: 01685 845900 fax: 01685 844538
www.primacare.co.uk info@primacare.co.uk