

Pamaz® Healthcare

Pamaz®
Healthcare

2011 / 2012

FLAME RETARDANT SOFT FURNISHINGS CATALOGUE

2011 / 2012

Pamaz®
Healthcare

Spring Mill | Fence, Nr Burnley | Lancashire | BB12 9HP | +44 (0)1282 696969

www.panaz.com

Flame Retardant Soft Furnishings Catalogue

DEAR HEALTHCARE PROFESSIONAL,

You have the important task of procuring soft furnishings for your Healthcare facility and you need to make the correct choice, delivering on every level: price, value, practicality, durability, performance, flame retardancy, quality and design.

When selecting products for your specific requirements, you need an experienced, proven partner who will fulfil all the criteria you require:



We are celebrating 25 years supplying to the NHS

Founded in 1985, Panaz have established a benchmark in the design and innovation of beautiful textiles, which have helped create caring environments that facilitate well-being.

Success and support is assured when choosing Panaz, an award winning company including twice achieving the prestigious Queens award for industry.

We will ensure that our products and services are second to none.

Simply call + 44 (0) 1282 696969
or email us on Admin@panaz.co.uk
Quote Contract Number FAG49 I 000

Simply call +44 (0)1282 696969

KEY FEATURES TO CONSIDER

OUR PRINT FACTORY

Panaz fabrics are produced using sublimatic printing techniques which involve no chemical processes, water or effluents. No solvents are used during the printing process and any possible contaminates, for example waste oil during routine maintenance, are collected from us by B & M Salvage Fuels, a company registered for the safe disposal of such products.

PACKAGING AND WASTE PAPER RECYCLING

All packaging materials, cardboard cores and transfer paper used in our manufacturing processes are obtained from using pulp from sustainable forests. Cores are re-used repeatedly and all other paper products are recycled through waste management systems. All printing inks are water soluble.

SHIELD AND PANAZ UPHOLSTERY - ANTI-MICROBIAL TECHNOLOGY

All Panaz anti-microbial drapes and soft upholsteries use mædical™ non-leaching technology that is a safe and responsible choice for the environment. Many migrating anti-microbial products contain phenols, heavy metals, arsenic, mercury and silver, which are not only harmful to micro-organisms but can also be harmful to humans. Migrating or leaching anti-microbials of all types have the propensity to contaminate the environment when used on curtains and bedding which undergo regular washing.

By contrast mædical™ is not a poison and is non-leaching, it remains bound and fixed to the fabric providing a permanent barrier against microbes. Shield Plus curtains and bedding protected by mædical™ can be burned or disposed of in landfill sites without adverse effects to the environment by the anti-microbial technology.

Excellent skin tolerance: OECD 406, HRIPT.
Free from heavy metals, silver, TBT, Formaldehyde, Triclosan, Non-Toxic to waste water bacteria and biodegradable – OECD 209 and 303B

OTHER ACTIVITIES AND THE FUTURE

Panaz has recently had a full survey by the Carbon Trust. The survey identified seven projects targeting a reduction in energy use and therefore CO2 emissions of 15%.

Panaz, in conjunction with the Carbon Trust, are actively exploring more ways that we can reduce our environmental footprint and implement a sustainability programme that will lead us into the next generation of safe sustainable policies.



WELCOME TO THE PANAZ FURNISHING COLLECTION

FABRICS

Fabrics impact on our perception and appreciation of our surroundings. This may be in helping to create aspirational environments which encourage learning and development or by fostering a sense of well-being, security and comfort in Healthcare facilities.

WHY PANAZ?

Our award-winning collections of Healthcare and Education specific furnishing fabrics combines attention to design and colour with the highest technical specification in order to produce durable, hard-working fabrics which assist Healthcare and teaching professionals to design environments which are cleaner, safer and even more resilient to daily wear and tear.

INNOVATIVE SPECIALISTS IN OUR FIELD THAT MAKE US A DOUBLE QUEENS AWARD WINNER

To achieve the level of innovation and technical excellence expected within our organization, along with continuous research and development, Panaz partner with specialists in related fields to incorporate their experience and awareness to enhance our products. These include:

Stirling University Dementia Services Department – for their review of our products and guidance on designing furnishings usable for dementia care environments.

Devan Chemicals – with whom Panaz has developed the exclusive Shield Plus™, an anti-microbial drapery which employs a unique, non-migrating, anti-microbial effective against the broadest spectrum of bacteria, including Clostridium difficile spore; tested for effectiveness by L'institut Pasteur de Lille.

Dan Floor – leading healthcare carpet manufacturer. Working together has enabled our mutual clients to select carpets and soft furnishings which complement and enhance one another and provide them with beautiful schemes.

Trevira CS – for the latest inherent yarns and textile chemistry.

CT Ltd – for the worldwide exclusive use of patented anti-microbial, waterproof, stain resistant, flame retardant and the highly durable upholstery Panvelle Stretch™.

ONE-STOP-SHOP

Our Healthcare Portfolio is unique in offering a one-stop-shop for fully contract quality furnishings across a whole range of applications including duvet covers, bedding, draperies, blinds, cubicle curtains and upholstery - simply choose the base cloth for your application requirement from page 8. All fabrics are tested by independent laboratories, certification is available on request.

The catalogue combines design and technical excellence in one **Essential Collection**.





Simply call +44 (0)1282 696969

CONTENTS

Welcome to Panaz **003**

>	Printed Patterned Curtains/Bedding/Accessories	010
>	Printed Semi Plain Curtains/Bedding/Accessories	060
>	Vinyl Upholstery	066
>	Printed Patterned & Plain Soft Waterproof Upholstery	082
>	Woven Waterproof Upholstery	102

Panaz Custom Design Service **114**

Recently Completed Projects **115**

Designing For Dementia Care Environments **116**

Shield Plus **120**

Care and Maintenance Of Your Upholstery **124**

Our Environmental Responsibility **126**





HOW TO USE THIS CATALOGUE

STEP 1

Browse the Colour Coded Sections



Printed Patterned Curtains/Bedding/Accessories



Select a base cloth



Printed Semi Plain Curtains/Bedding/Accessories



Select a base cloth



Vinyl Upholstery



Printed Patterned & Plain Soft Waterproof Upholstery



Woven Waterproof Upholstery

STEP 2

Select a design

STEP 3

Select a colour

STEP 4

*Email to place your order
or call to discuss your requirements further*



(0)1282 696969











admin@panaz.co.uk



BASE CLOTHS

Simply choose from the many beautiful print designs and colourways on the following pages, all of which can be printed on to the appropriate base cloth for your particular application. To assist you in your selection, a sample card of base cloths is available upon request.

Quality	Fabric Ref	End Use							Width cm
		Bedding: Duvet covers, sheets and pillow cases	Window curtains	Shower curtains	Cubicle curtains	Bedspreads	Upholstery: Non impervious for loose covers	Upholstery: Impervious	
PRINTED FABRICS All Panaz printed designs may be printed on any of the base cloths listed below. Samples of any design printed on the base cloth of your choice are available upon request. * Double sided prints - minimum order 50mtrs. The reverse is printed with a semi plain design.									
Plainweave light	WW222	•							138
Plainweave light with lining	WW222		•						138
Satin filament	A09		•		•	•			138
Satin filament Double sided print*	A099		•		•				138
Satin filament Anti-microbial fabric 	A09S Shield Plus		•		•				138
Satin filament Anti-microbial fabric Double sided print* 	A099S Shield Plus				•				138
Panama weave with/without lining	WW333		•						138
Linen look	WW588		•			•			138
Super soft dimout	WW36X		•		•				138
Super soft dimout Double sided print*	WW360X		•		•				138
Super soft dimout Anti-microbial fabric 	WW36XS Shield Plus		•		•				138
Super soft dimout Anti-microbial Double sided print* 	WW360XS Shield Plus		•		•				138
Blackout	WW34T		•						140
Silk slub effect	WW60		•			•			138
Anti-microbial single sided print 	W05			•					140
Plainweave	WW3		•			•	•		138
Upholstery satin	A01						•		138
Panvelle Anti-microbial Waterproof 	W04							•	138
Panvelle Stretch Anti-microbial Waterproof 	W07							•	137
Panvelle Wash Anti-microbial Waterproof 	W014							•	138



Colour reproduction in this catalogue is as accurate as photographic and printing processes allow. General terms and conditions of sale available on request.

Simply call +44 (0)1282 696969

Weight g/m ²	Martindale abraision	Flammability ratings			Recommended cleaning
		BS5867 Part 2 Type C	BS5867 Part 2 Type B	BS5852 Part 2 Ignition source 5	
145			•		Thermal Disinfection
167			•		Thermal Disinfection
230		•	•		Thermal Disinfection
230		•	•		Thermal Disinfection
280		•	•		Thermal Disinfection
280		•	•		Thermal Disinfection
250			•		Thermal Disinfection
235		•	•		Thermal Disinfection
280		•	•		Thermal Disinfection
280		•	•		Thermal Disinfection
280		•	•		Thermal Disinfection
280		•	•		Thermal Disinfection
300			•		
167			•		Thermal Disinfection
220			•		
220	40,000 +		•		Thermal Disinfection
240	40,000 +			•	Thermal Disinfection
400	60,000 +			•	Non-Washable
400	60,000 +			•	Non-Washable
390	60,000 +			•	Washable at low temperatures





Simply call +44 (0)1282 696969

PRINTED PATTERNED CURTAINS / BEDDING / ACCESSORIES

Why buy me?

Wide selection of inherently
flame retardant base cloths

Anti-microbial option
(Shield Plus)

Stirling Rating 1, 2 or 3

Available as a dim-out fabric

Draperies or bedding

Washable at thermal
disinfectant temperatures

DESIGNS FEATURED:

CARNIVAL / TANGO STRIPE / JITTERBUG / TWIST / SALSA / SWING / BLENDWORTH / SCROLL / HAREWOOD
HARLINGTON / VALENCIA SCROLL / BROUGHTON / VALENCIA STRIPE / BENEDETTO PRINT / BRAMANTE PRINT
ELEGANT LEAF / COLONY / MILAN / MONACO / TORO / SEKINO / SENTO / UTAMARO / SUBURBIA / CAPITAL STRIPE
PLAZA / ESCAPE / FIESTA / SIERRA / CHERISH PRINT / VERANO / TEXTURED CHECK / QUADRANT / AXIS / ANGLES
MOAIC / SEALIFE / COASTLINE / PLAYTIME / FESTIVITY / FOLIA / POPLAR / LINDEN STRIPE / TILIA



> CARNIVAL



Carnival 348 Gold/Henna



Carnival 867 Linen/Mulberry



Carnival 831 Cream/Gold



Carnival 237 Lime/Flax
Height Repeat: Approx 62cm (24.4")



Carnival 840 Beige/Red



Carnival 158 Duck Egg/Cream

Printed | Curtains | Bedding | Accessories

Co-ordinating designs | Carnival | Tango Stripe | Jitterbug | Twist | Salsa | Swing

Simply call +44 (0)1282 696969



Tango Stripe 480 Red/Beige



Tango Stripe 348 Gold/Henna

Tango Stripe 273 Lime/Brown
Height Repeat: Approx 62cm (24.4")

Tango Stripe 120 Blue/Green



Tango Stripe 681 Mulberry/Linen



Tango Stripe 704 Mink/Beige

Printed | Curtains | Bedding | Accessories

Co-ordinating designs | Carnival | Tango Stripe | Jitterbug | Twist | Salsa | Swing



JITTERBUG



Jitterbug 348 Gold/Henna



Jitterbug 681 Mulberry/Linen



Jitterbug 130 Blue/Gold



Jitterbug 237 Lime/Flax
Height Repeat: Approx 31cm (12.2")



Jitterbug 480 Red/Beige



Jitterbug 713 Mink/Duck Egg

Printed | Curtains | Bedding | Accessories

Co-ordinating designs | Carnival | Tango Stripe | Jitterbug | Twist | Salsa | Swing |

Simply call +44 (0)1282 696969



Twist 713 Mink/Duck Egg



Twist 100 Blue

Twist 237 Lime/Flax
Height Repeat: Approx 31cm (12.2")

Twist 320 Gold/Green



Twist 800 Beige



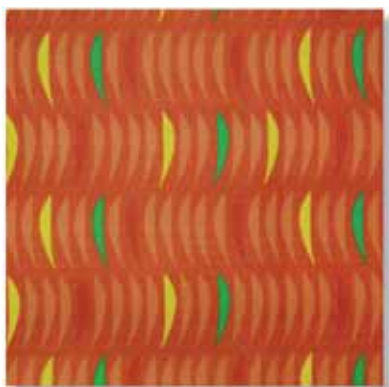
Twist 681 Mulberry/Linen

Printed | Curtains | Bedding | Accessories

Co-ordinating designs | Carnival | Tango Stripe | Jitterbug | Twist | Salsa | Swing



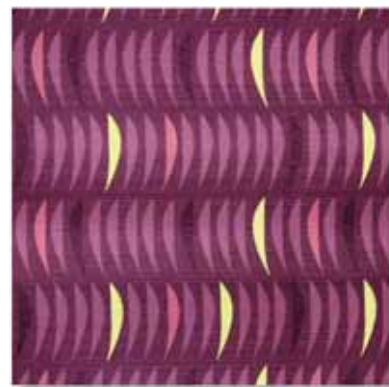
SALSA



Salsa 404 Henna



Salsa 400 Red



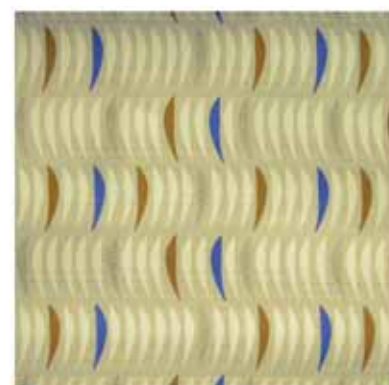
Salsa 624 Mulberry



Salsa 872 Flax
Height Repeat: Approx 62cm (24.4")



Salsa 853 Cream/Duck Egg



Salsa 831 Cream/Gold

Printed | Curtains | Bedding | Accessories

Co-ordinating designs | Carnival | Tango Stripe | Jitterbug | Twist | Salsa | Swing

Simply call +44 (0)1282 696969



Swing 871 Beige/Chocolate

Swing 226 Lime
Height Repeat: Approx 62cm (24.4")

Swing 300 Gold



Swing 100 Blue



Swing 813 Linen



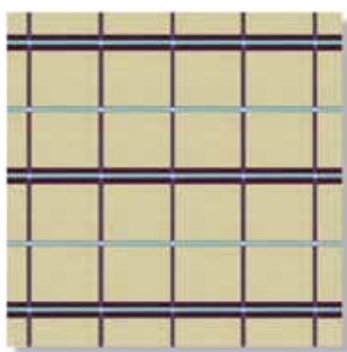
Swing 853 Cream/Duck Egg

Printed | Curtains | Bedding | Accessories

Co-ordinating designs | Carnival | Tango Stripe | Jitterbug | Twist | Salsa | **Swing**



Simply call +44 (0)1282 696969



Harlington 800 Beige



Harewood 155 Duck Egg Blue
Height Repeat: Approx 64cm (25")



Harewood 608 Fuchsia



Blendworth Scroll 155 Duck Egg Blue
Height Repeat: Approx 16cm (6.3")



Blendworth Scroll 200 Green

Printed | Curtains | Bedding | Accessories

Co-ordinating designs | Blendworth Scroll | Harewood | Harlington | Valencia Scroll | Broughton
Valencia Stripe | Benedet to Print | Bramante Print | Elegant Leaf | Colony



VALENCIA SCROLL



Valencia Scroll 624 Mulberry



Valencia Scroll 404 Henna



Valencia Scroll 608 Fuchsia



Valencia Scroll 703 Mink
Height Repeat: Approx 64cm (25")



Valencia Scroll 130 Blue Gold



Valencia Scroll 241 Emerald/Red

Printed | Curtains | Bedding | Accessories

Co-ordinating designs | Blendworth Scroll | Harewood | Harlington | Valencia Scroll | Broughton
Valencia Stripe | Benedet to Print | Bramante Print | Elegant Leaf | Colony

Simply call +44 (0)1282 696969



Broughton 624 Mulberry



Broughton 426 Terracotta/Gold

Broughton 713 Mink/Duck Egg Blue
Height Repeat: Nil

Valencia Stripe 241 Emerald/Red



Broughton 269 Green/Fuchsia



Broughton 130 Blue/Gold

Printed | Curtains | Bedding | Accessories

Co-ordinating designs | Blendworth Scroll | Harewood | Harlington | Valencia Scroll | Broughton
Valencia Stripe | Benedet to Print | Bramante Print | Elegant Leaf | Colony

> BENEDETTO PRINT



Benedetto Print 300 Gold



Benedetto Print 404 Henna
Height Repeat: Approx 32cm (12.5")



Benedetto Print 155 Duck Egg Blue



Benedetto Print 225 Soft Green

Printed | Curtains | Bedding | Accessories

Co-ordinating designs | Blendworth Scroll | Harewood | Harlington | Valencia Scroll | Broughton
Valencia Stripe | Benedetto Print | Bramante Print | Elegant Leaf | Colony

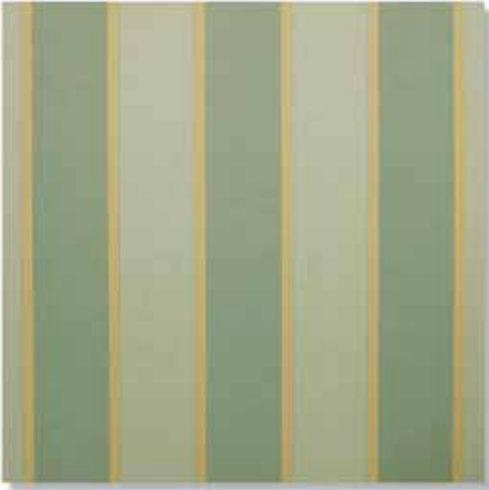
Simply call +44 (0)1282 696969



Bramante Print 404 Henna
Height Repeat: Nil



Bramante Print 300 Gold



Bramante Print 225 Soft Green



Bramante Print 155 Duck Egg Blue

Printed | Curtains | Bedding | Accessories

Co-ordinating designs | Blendworth Scroll | Harewood | Harlington | Valencia Scroll | Broughton
Valencia Stripe | Benedet to Print | **Bramante Print** | Elegant Leaf | Colony

> ELEGANT LEAF



Elegant Leaf 837 Stone



Elegant Leaf 217 Pacific



Elegant Leaf 704 Mink/Beige



Elegant Leaf 507 Rich Ivory
Height Repeat: Approx 64cm (25")



Elegant Leaf 179 Blue/Cream



Elegant Leaf 484 Henna/Fawn

Printed | Curtains | Bedding | Accessories

Co-ordinating designs | Blendworth Scroll | Harewood | Harlington | Valencia Scroll | Broughton
Valencia Stripe | Benedetto Print | Bramante Print | **Elegant Leaf** | Colony

Simply call +44 (0)1282 696969



Colony 624 Mulberry
Height Repeat: Approx 64cm (25")



Colony 100 Blue

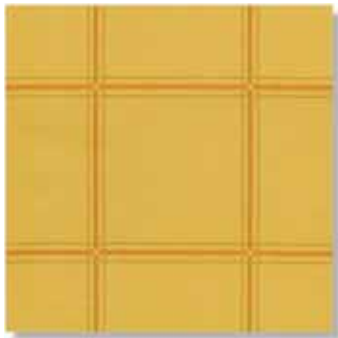
Printed | Curtains | Bedding | Accessories

Co-ordinating designs | Blendworth Scroll | Harewood | Harlington | Valencia Scroll | Broughton
Valencia Stripe | Benedetto Print | Bramante Print | Elegant Leaf | Colony





Milan 429 Chilli



Milan 326 Hay

Milan 807 Mushroom
Height Repeat: Approx 11.4cm (4.5")

Milan 158 Duck Egg/Cream



Milan 197 Pigeon Grey



Milan 823 Chablis



Milan 624 Mulberry

Printed | Curtains | Bedding | Accessories



MONACO



Monaco 429 Chilli



Monaco 624 Mulberry



Monaco 807 Mushroom



Monaco 288 Teal/Espresso



Monaco 158 Duck Egg/Cream



Monaco 852 Beige/Cream



Monaco 279 Lime/Mocha
Height Repeat: Approx 68.5cm (27")

Printed | Curtains | Bedding | Accessories |



Toro 404 Henna



Toro 867 Linen/Mulberry

Toro 624 Mulberry
Height Repeat: Approx 16cm (6.3")

Toro 420 Red/Green



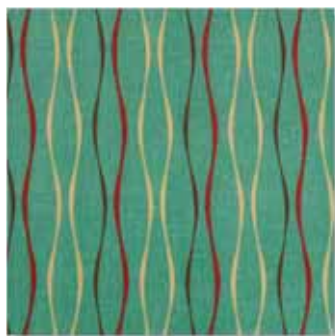
Toro 318 Maize/Teal



Toro 441 Red/Amber



Toro 601 Coral/Blue



Toro 201 Jade



Toro 300 Gold

Printed | Curtains | Bedding | Accessories

Co-ordinating designs | Toro | Sekino | Sento | Utamaro



SEKINO



Sekino 300 Gold



Sekino 240 Green/Red



Sekino 400 Red



Sekino 130 Blue/Gold
Height Repeat: Approx 64cm (25")



Sekino 702 Chocolate

Printed | Curtains | Bedding | Accessories

Co-ordinating designs | Toro | Sekino | Sento | Utamaro

Simply call +44 (0)1282 696969



Sekino 867 Linen/Mulberry
Height Repeat: Approx 64cm (25")



Sekino 318 Maize/Teal



Sekino 601 Coral/Blue



Sekino 800 Beige

Printed | Curtains | Bedding | Accessories

Co-ordinating designs | Toro | Sekino | Sento | Utamaro

> SENTO



Sento 441 Red/Amber



Sento 721 Chocolate/Jade



Sento 348 Gold/Henna



Sento 130 Blue/Gold
Height Repeat: Nil



Sento 866 Beige/Mulberry



Sento 240 Green/Red

Printed | Curtains | Bedding | Accessories

Co-ordinating designs | Toro | Sekino | Sento | Utamaro

Simply call +44 (0)1282 696969



Utamaro 702 Chocolate



Utamaro 300 Gold

Utamaro 100 Blue
Height Repeat: Approx 64cm (25.2")

Utamaro 400 Red



Utamaro 401 Amber



Utamaro 800 Beige

Printed | Curtains | Bedding | Accessories

Co-ordinating designs | Toro | Sekino | Sento | **Utamaro**



Simply call +44 (0)1282 696969



Suburbia 300 Gold



Suburbia 824 Ochre

Suburbia 226 Lime
Height Repeat: Approx 64cm (25")

Suburbia 805 Cream



Suburbia 706 Latte



Suburbia 155 Duck Egg Blue



Suburbia 703 Mink



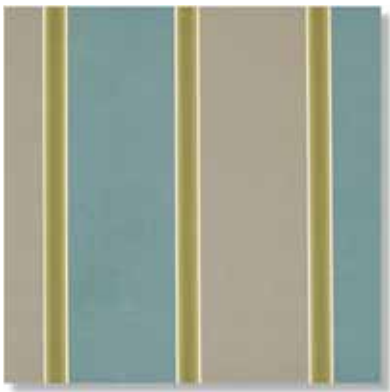
Suburbia 904 Pewter

Printed | Curtains | Bedding | Accessories

Co-ordinating designs | Suburbia | Capital Stripe | Plaza | Escape



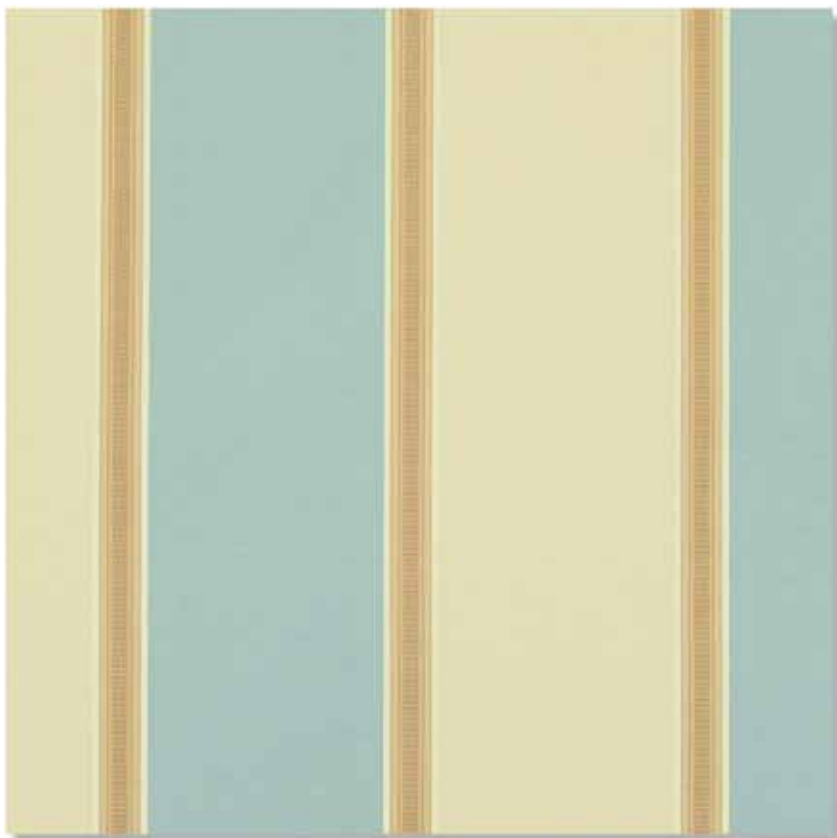
CAPITAL STRIPE



Capital Stripe 289 Teal/Latte



Capital Stripe 426 Terracotta/Gold



Capital Stripe 158 Duck Egg/Cream
Height Repeat: Nil



Capital Stripe 938 Pewter/Sand

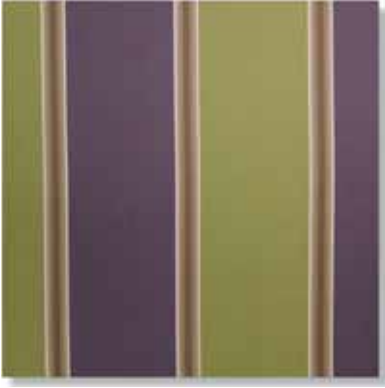


Capital Stripe 837 Stone

Printed | Curtains | Bedding | Accessories

Co-ordinating designs | Suburbia | Capital Stripe | Plaza | Escape

Simply call +44 (0)1282 696969



Capital Stripe 264 Lime/Purple



Capital Stripe 673 Mulberry/Mink



Capital Stripe 457 Raspberry/Chocolate



Capital Stripe 445 Henna/Crimson



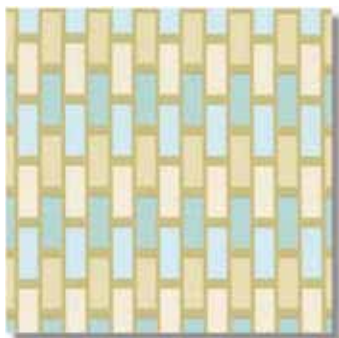
Capital Stripe 716 Mocha/Indigo

Printed | Curtains | Bedding | Accessories

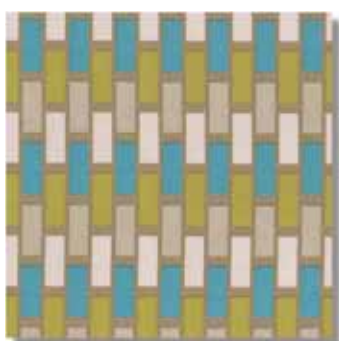
Co-ordinating designs | Suburbia | Capital Stripe | Plaza | Escape



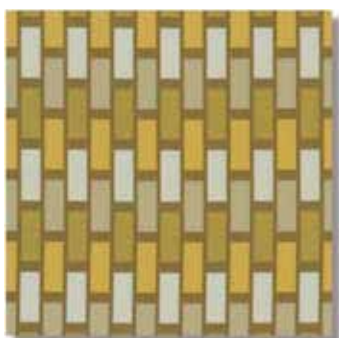
Simply call +44 (0)1282 696969



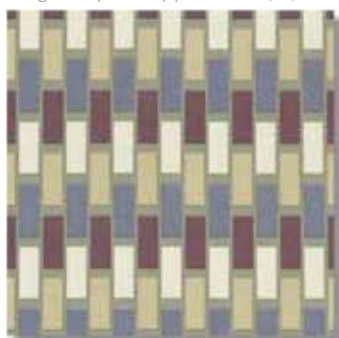
Plaza 158 Duck Egg/Cream



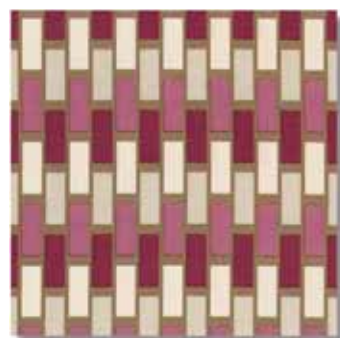
Plaza 289 Teal/Latte

Plaza 837 Stone
Height Repeat: Approx 8cm (3")

Plaza 300 Gold



Plaza 745 Mink/Purple



Plaza 457 Raspberry/Chocolate



Plaza 716 Mocha/Indigo

Printed | Curtains | Bedding | Accessories

Co-ordinating designs | Suburbia | Capital Stripe | Plaza | Escape



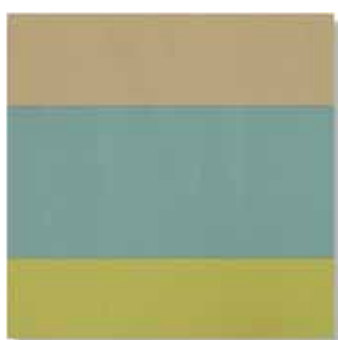
ESCAPE



Escape 883 Cream/Sand



Escape 300 Gold



Escape 289 Teal/Latte



Escape 933 Copper/Gold



Escape 411 Spice



Escape 978 Pewter/Mink
Height Repeat: Approx 64cm (25")



Escape 457 Raspberry/Chocolate



Escape 745 Mink/Purple

Printed | Curtains | Bedding | Accessories

Co-ordinating designs | Suburbia | Capital Stripe | Plaza | **Escape**

Simply call +44 (0)1282 696969



> ESCAPE



Escape 303 Lemon



Escape 178 Aqua/Cream
Height Repeat: Approx 64cm (25")



Escape 274 Lime/Beige



Escape 433 Red/Yellow

Printed | Curtains | Bedding | Accessories

Co-ordinating designs | **Escape** | Fiesta | Sierra | Cherish Print | Verano

Simply call +44 (0)1282 696969

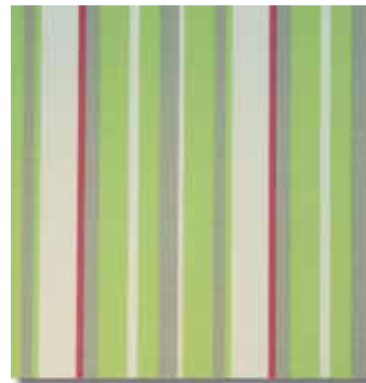




FIESTA



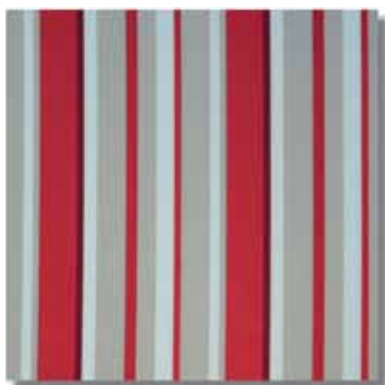
Fiesta 171 Turquoise/Lime



Fiesta 274 Lime/Beige



Fiesta 842 Beige/Orange



Fiesta 480 Red/Beige



Fiesta 109 Sky/Indigo



Fiesta 901 Silver

Printed | Curtains | Bedding | Accessories

Co-ordinating designs | Escape | **Fiesta** | Sierra | Cherish Print | Verano

Simply call +44 (0)1282 696969



Sierra 453 Red/Charcoal



Sierra 842 Beige/Orange



Sierra 682 Fuschia/Beige



Sierra 109 Sky/Indigo



Sierra 171 Turquoise/Lime

Printed | Curtains | Bedding | Accessories

Co-ordinating designs | Escape | Fiesta | Sierra | Cherish Print | Verano



CHERISH PRINT



Cherish Print 100 Blue



Cherish Print 805 Cream



Cherish Print 440 Scarlet



Cherish Print 222 Apple



Cherish Print 303 Lemon

Printed | Curtains | Bedding | Accessories

Co-ordinating designs | Escape | Fiesta | Sierra | Cherish Print | Verano

Simply call +44 (0)1282 696969



Verano 101 Blue/White
Height Repeat: Nil



Verano 901 Silver



Verano 441 Red/Amber



Verano 638 Mango

Printed | Curtains | Bedding | Accessories

Co-ordinating designs | Escape | Fiesta | Sierra | Cherish Print | Verano





Textured Check 127 Lilac
Height Repeat: Approx 32cm (12.6")



Textured Check 130 Blue/Gold



Textured Check 139 Aqua



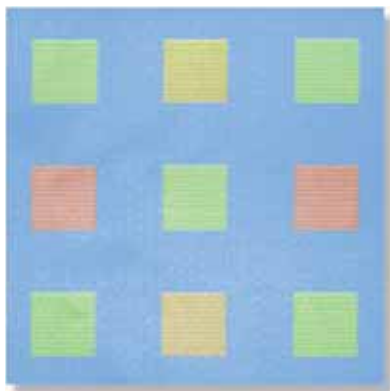
Textured Check 147 Blue/Orange

Printed | Curtains | Bedding | Accessories

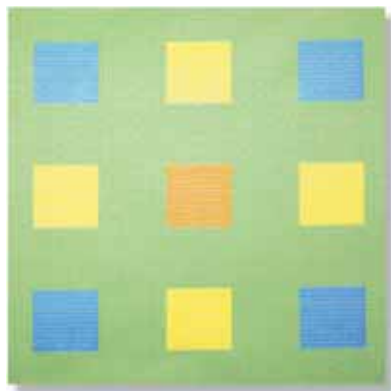
Co-ordinating designs | Textured Check | Quadrant | Axis | Angles | Mosaic



QUADRANT



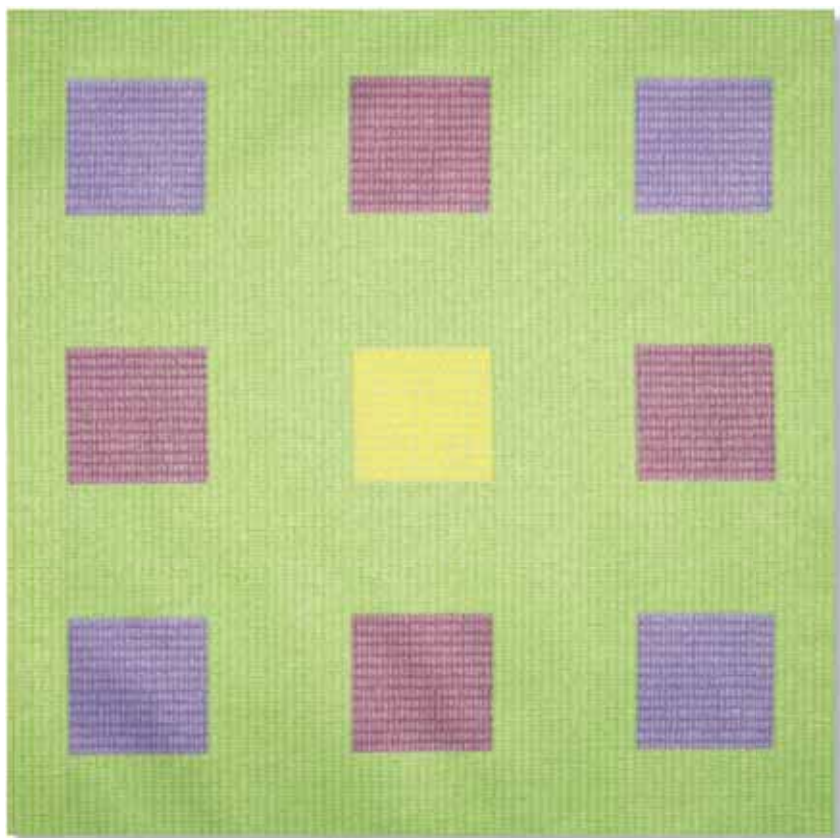
Quadrant 134 Sky



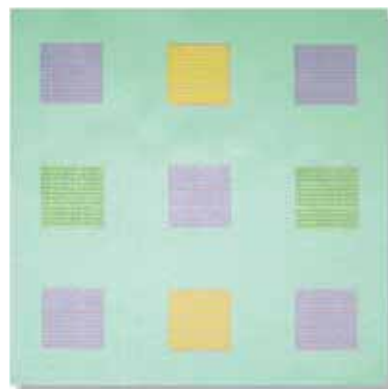
Quadrant 225 Soft Green



Quadrant 130 Blue/Gold



Quadrant 214 Moss/Lavender
Height Repeat: Approx 16cm (6.3")



Quadrant 139 Aqua

Printed | Curtains | Bedding | Accessories

Co-ordinating designs | Textured Check | **Quadrant** | Axis | Angles | Mosaic

Simply call +44 (0)1282 696969



Axis 130 Blue/Gold



Axis 147 Blue/Orange



Axis 127 Lilac
Height Repeat: Nil



Angles 130 Blue/Gold



Angles 127 Lilac
Height Repeat: Approx 64cm (25")

Printed | Curtains | Bedding | Accessories

Co-ordinating designs | Textured Check | Quadrant | Axis | Angles | Mosaic



MOSAIC



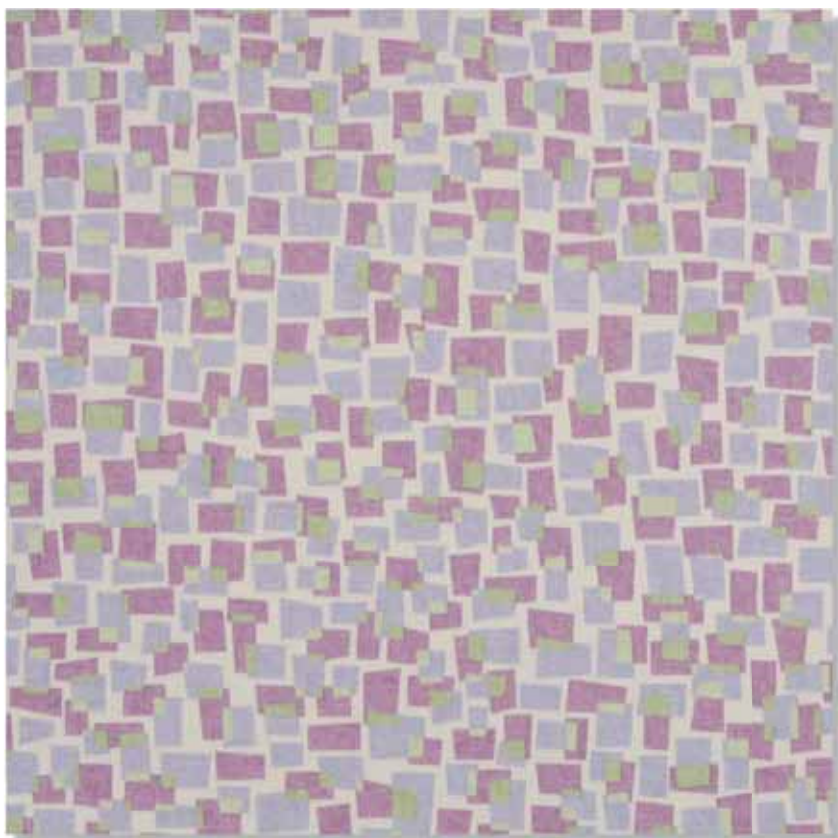
Mosaic 300 Gold



Mosaic 225 Soft Green



Mosaic 130 Blue/Gold



Mosaic 127 Lilac
Height Repeat: Approx 47cm (18.5")

Printed | Curtains | Bedding | Accessories

Co-ordinating designs | Textured Check | Quadrant | Axis | Angles | **Mosaic**

Simply call +44 (0)1282 696969



Sealife 130 Blue/Gold
Height Repeat: Approx 64cm (25.2")



Sealife 171 Turquoise/Lime

Printed | Curtains | Bedding | Accessories



COASTLINE & PLAYTIME



Coastline 130 Blue/Gold
Height Repeat: Approx 64cm (25.2")



Playtime 172 Blue/Lime
Height Repeat: Approx 64cm (25.2")

Printed | Curtains | Bedding | Accessories



Festivity 127 Lilac
Height Repeat: Approx 62cm (24.4")



Folia 832 Antique Beige



Folia 100 Blue
Height Repeat: Approx 16cm (6.3")

Printed | Curtains | Bedding | Accessories



Simply call +44 (0)1282 696969



Poplar 120 Blue/Green
Height Repeat: Approx 64cm (25.2")



Poplar 626 Rose/Green



Poplar 139 Aqua



Poplar 426 Terracotta/Gold

Printed | Curtains | Bedding | Accessories

> LINDEN STRIPE



Linden Stripe 611 Dusky Pink



Linden Stripe 628 Chinz
Height Repeat: Approx 68cm (26.75")



Linden Stripe 114 Lavender

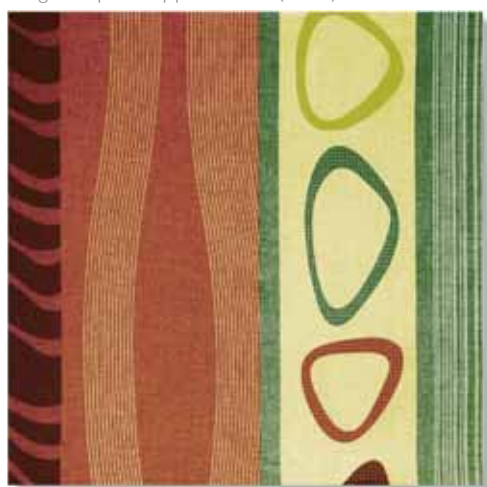
Printed | Curtains | Bedding | Accessories



Tilia 261 Jade/Pink
Height Repeat: Approx 64cm (25.2")



Tilia 135 Blue/Aqua



Tilia 268 Green/Burgandy



Tilia 141 Turquoise/Lavender

Printed | Curtains | Bedding | Accessories



PRINTED SEMI PLAIN CURTAINS / BEDDING / ACCESSORIES

Why buy me?

Wide selection of inherently
flame retardant base cloths

Anti-microbial option
(Shield Plus)

Stirling Rating 1, 2 or 3

Available as a dim-out fabric

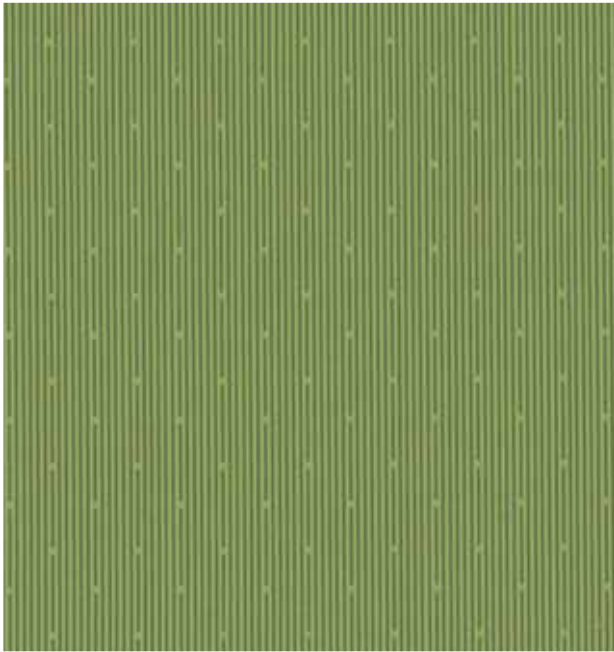
Draperies or bedding

Washable at thermal
disinfectant temperatures

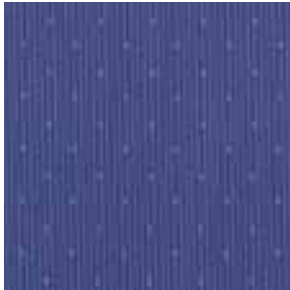
DESIGNS FEATURED:

AURA / OSLO / ESSENCE PRINT / EDO / SILVERSTONE

> AURA



Aura 204 Moss



Aura 116 Navy



Aura 624 Mulberry



Aura 608 Fuschia



Aura 424 Vermillion



Aura 155 Duck Egg Blue



Aura 225 Soft Green



Aura 404 Henna



Aura 800 Beige



Aura 317 Soft Gold



Aura 301 Saffron

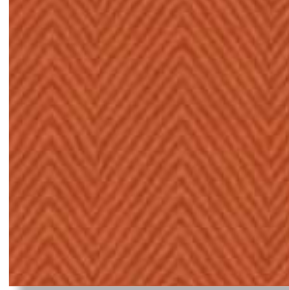
Printed Semi Plain | Curtains | Bedding | Accessories



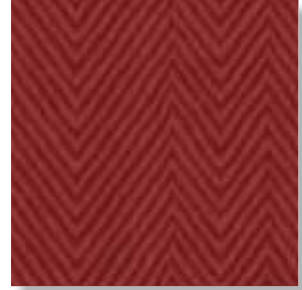
Oslo 226 Lime



Oslo 326 Hay



Oslo 408 Terracotta



Oslo 429 Chilli



Oslo 211 Spruce



Oslo 155 Duck Egg Blue



Oslo 823 Chablis



Oslo 609 Rose



Oslo 814 Espresso



Oslo 807 Mushroom



Oslo 114 Lavender



Oslo 624 Mulberry



Oslo 105 Indigo



Oslo 903 Charcoal



Oslo 197 Pigeon Grey

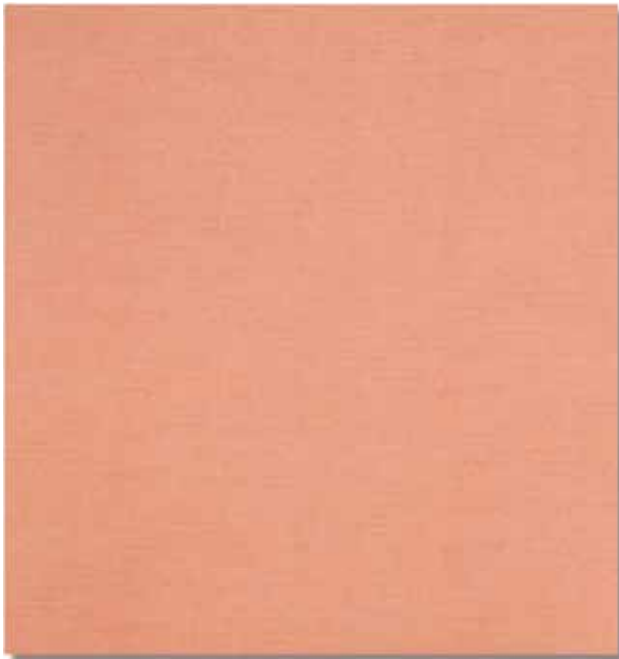


Oslo 837 Stone

Printed Semi Plain | Curtains | Bedding | Accessories



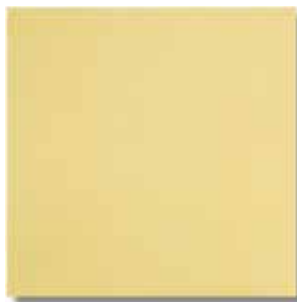
ESSENCE PRINT



Essence Print 602 Peach
Height Repeat: Nil



Essence Print 600 Pink



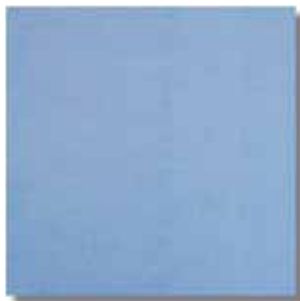
Essence Print 303 Lemon



Essence Print 227 Mint



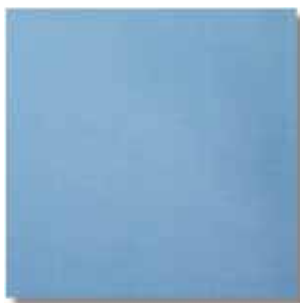
Essence Print 127 Lilac



Essence Print 100 Blue

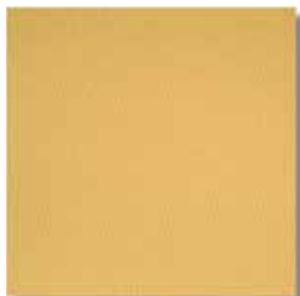


Essence Print 139 Aqua



Essence Print 129 Ocean

Printed Semi Plain | Curtains | Bedding | Accessories



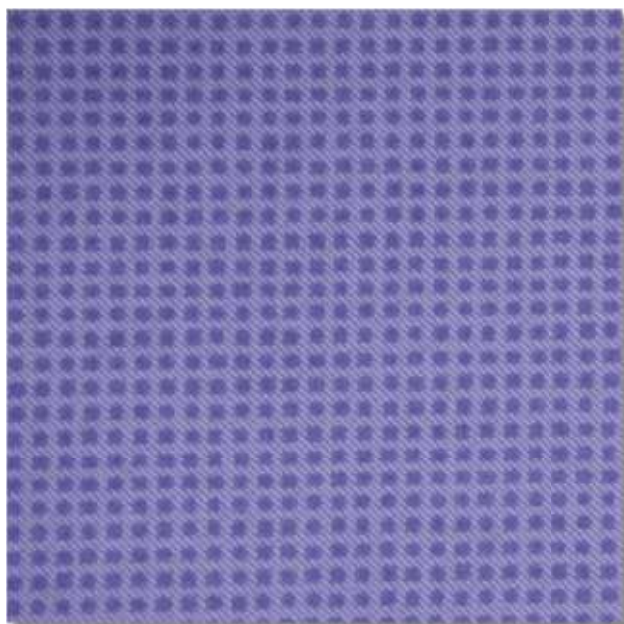
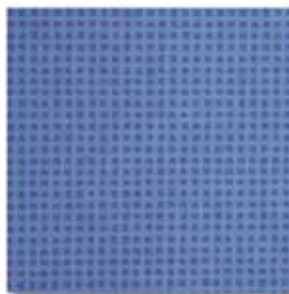
Edo 300 Gold

Edo 400 Red
Height Repeat: Nil

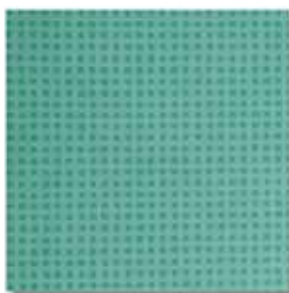
Edo 100 Blue



Edo 800 Beige

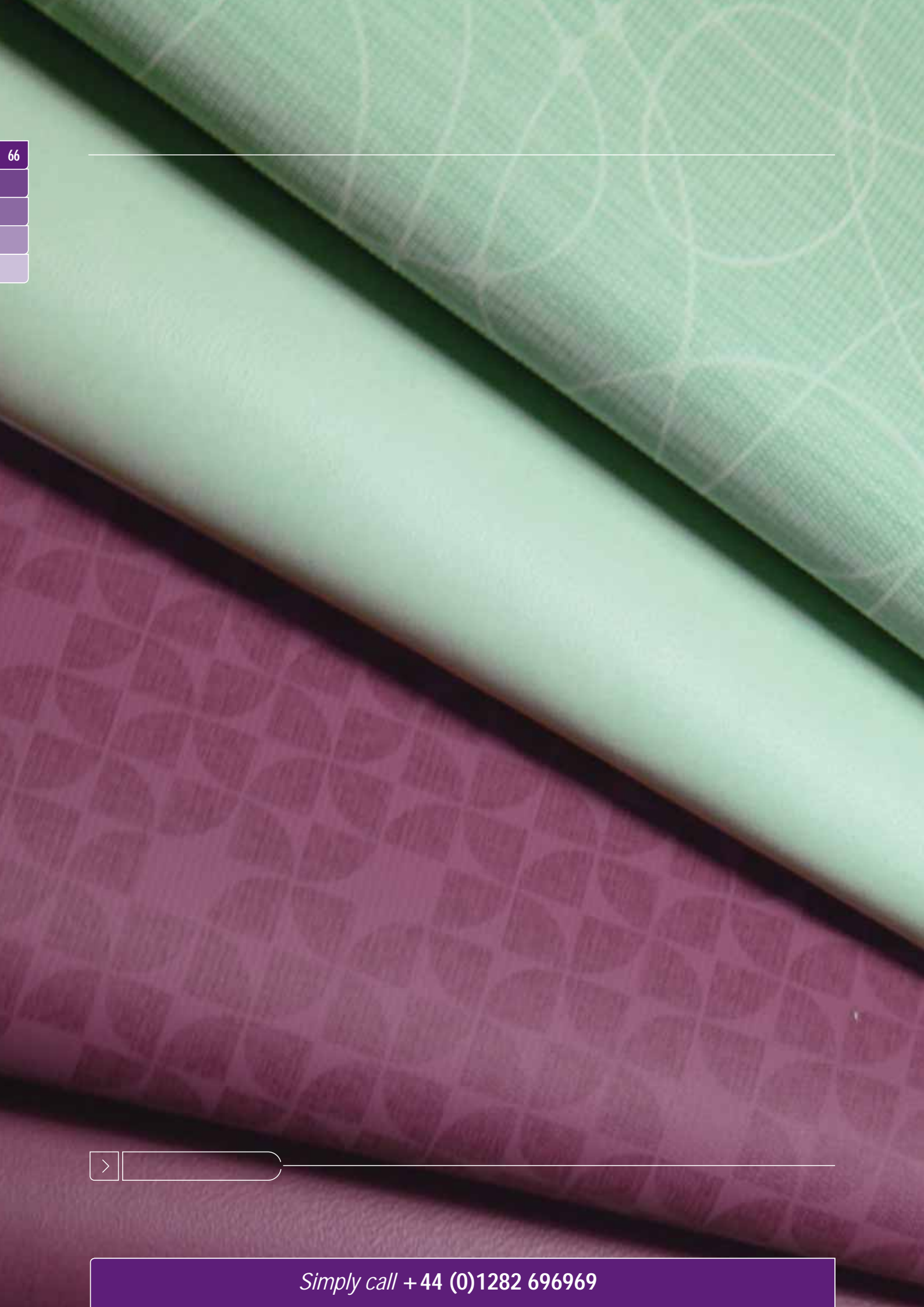
Silverstone 114 Lavender
Height Repeat: Nil

Silverstone 100 Blue



Silverstone 139 Aqua

Printed Semi Plain | Curtains | Bedding | Accessories



VINYL UPHOLSTERY

No fabric works harder than Panaz vinyl upholstery to deliver high performance in extreme Healthcare environments. Ranging from Aston and Brookland faux leathers in sophisticated hues to Cadet Classic, Contemporary and Zest in a riot of colour and attractive designs, all Panaz vinyls feature the same important benefits.

Vyflex™, a close companion of Cadet, offers all the same features and benefits, but is unique in its multi-directional stretch, which, coupled with one of the new generation of memory foam, provides pressure relief seating for the long term infirm.

Pushing the barriers still further, Cadet Advantage 7 offers Crib 7 flame retardancy for establishments where occupants have limited mobility and require a higher level of FR afforded by upholsteries.

Why buy me?

Flame retardant to Crib 5 and Crib 7

Anti-microbial and anti-fungal protection passing AATCC 147 that prohibits growth of bacteria and associated odours, infection and cross-contamination.

Waterproof

Stain resistant

High scratch resistance with the colour solid from the vinyl right through to the base cloth.

Cleaning with 5% bleach solutions

Stirling Rating 1, 2 or 3

100,000 Martindale rubs

DESIGNS FEATURED:

VOYAGE / TREK / VENTURE / AMATHUS / QUATTRO / VOGUE / ZEST / VYFLEX / ASTON / BROOKLAND





VOYAGE



Voyage 155 Duck Egg
Height Repeat: Approx 64cm (25")



Voyage 823 Chablis



Voyage 321 Wheat



Voyage 401 Amber



Voyage 317 Soft Gold



Voyage 198 Hyacinth



Voyage 105 Indigo



Voyage 624 Mulberry



Voyage 609 Rose



Voyage 703 Mink



Voyage 801 Tan



Voyage 807 Mushroom

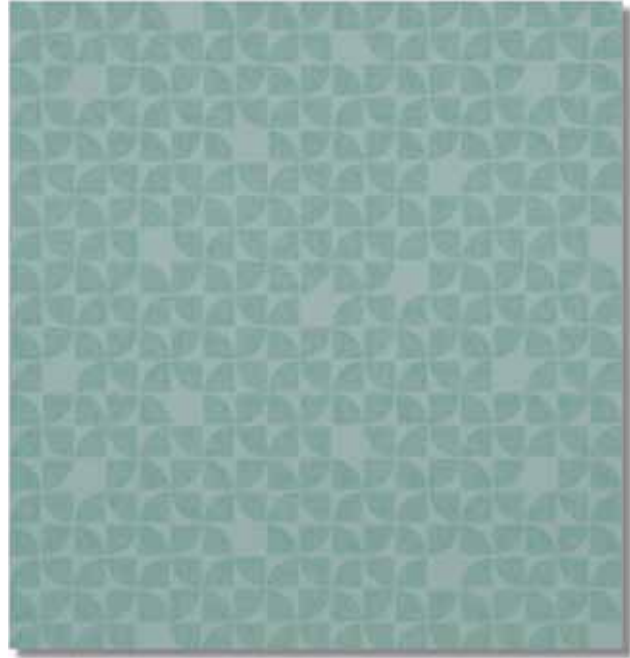
| Vinyl Upholstery



Trek 105 Indigo



Trek 198 Hyacinth



Trek 155 Duck Egg
Height Repeat: Approx 8cm (3.15")



Trek 219 Seafoam



Trek 226 Lime



Trek 624 Mulberry



Trek 609 Rose



Trek 401 Amber



Trek 317 Soft Gold



Trek 807 Mushroom



Trek 823 Chablis



Trek 321 Wheat

> VENTURE



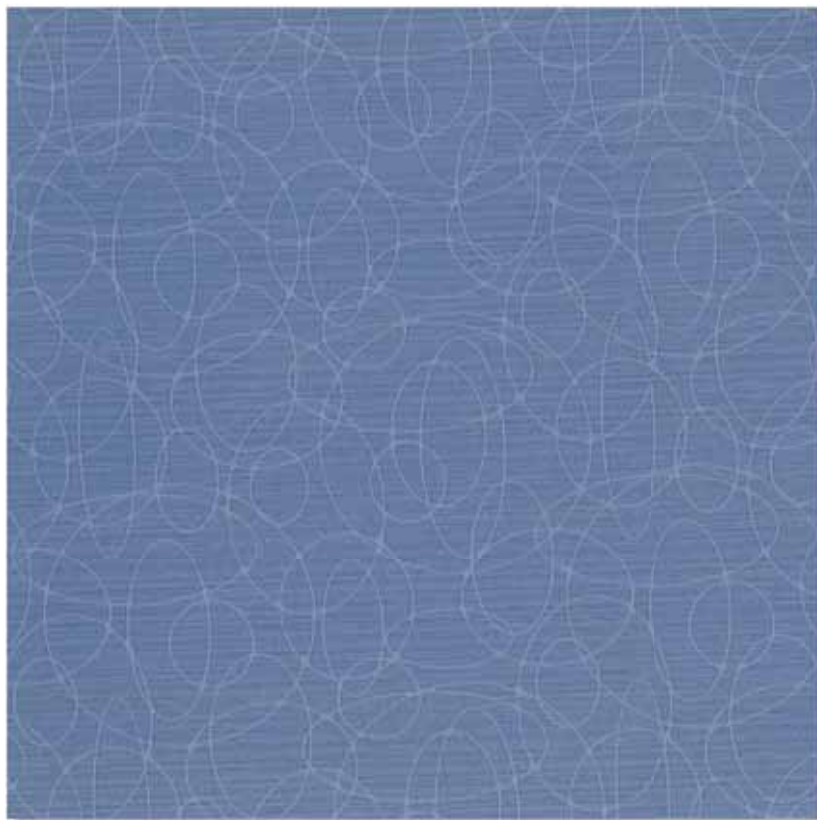
Venture 609 Rose



Venture 624 Mulberry



Venture 807 Mushroom



Venture 198 Hyacinth
Height Repeat: Approx 12.8cm (5")



Venture 155 Duck Egg



Venture 321 Wheat

| Vinyl Upholstery



Amathus Henna 460310



Amathus Fawn 460308



Amathus Sky 552015
Height Repeat: Approx 4.5cm (1.8")



Amathus Jade 460311



Amathus Emerald 460312



Amathus Navy 460314

Vinyl Upholstery |

Co-ordinating designs | Amathus | Quattro | Vogue



QUATTRO



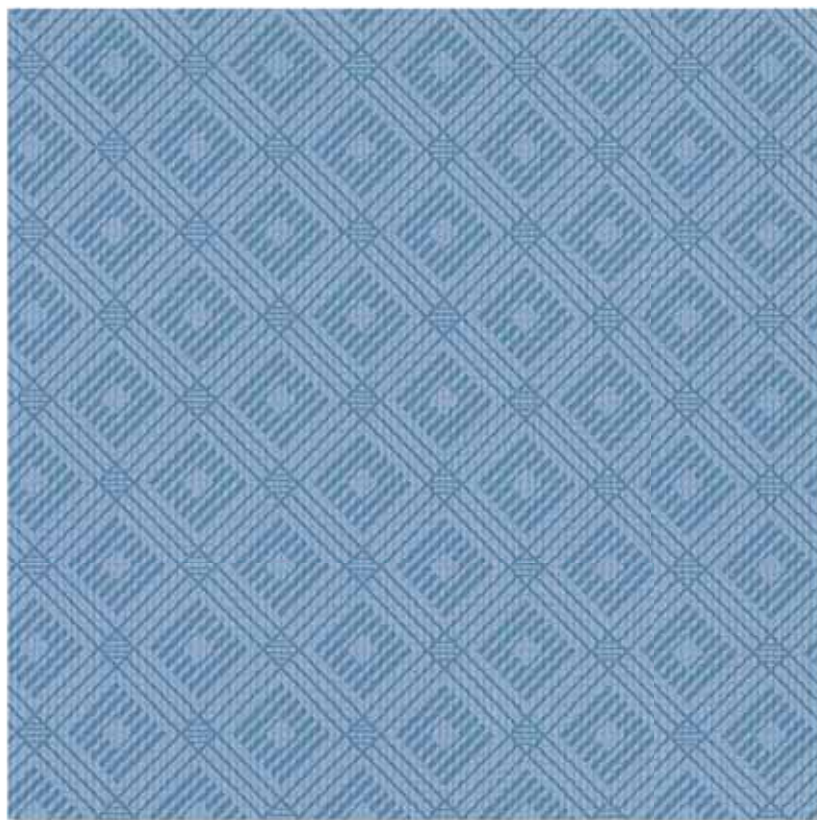
Quattro Navy 460321



Quattro Emerald 460319



Quattro Henna 460317



Quattro Sky 552018
Height Repeat: Approx 1.7cm (0.7")



Quattro Fawn 460315



Quattro Jade 460318

| Vinyl Upholstery

Co-ordinating designs | Amathus | Quattro | Vogue

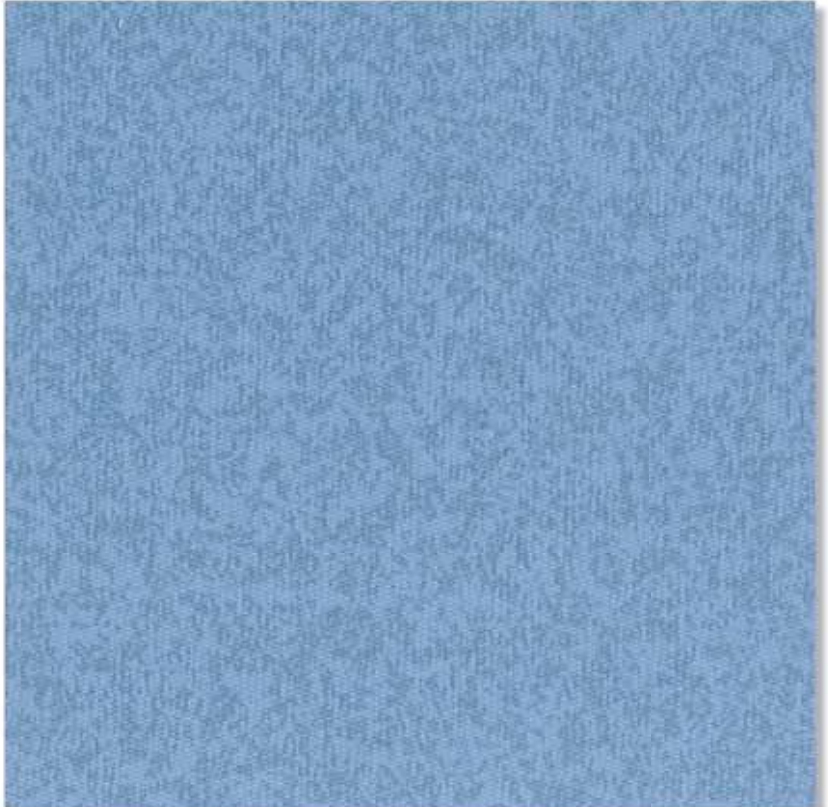
Simply call +44 (0)1282 696969



Vogue Henna 460303



Vogue Fawn 460301



Vogue Sky 552012
Height Repeat: Nil



Vogue Jade 460304



Vogue Emerald 460305



Vogue Navy 460307

Vinyl Upholstery |

Co-ordinating designs | Amathus | Quattro | Vogue





Zest 303 Lemon



Zest 438 Tangerine
Height Repeat: Nil



Zest 222 Apple



Zest 608 Fuchsia



Zest 128 Violet



Zest 440 Scarlet



Zest 124 Electric Blue



Vyflex 407 Burgundy



Vyflex 807 Mushroom



Vyflex 804 Fawn



Vyflex 814 Espresso
Height Repeat: Nil



Vyflex 823 Chablis



Vyflex 404 Henna

Vyflex 201 Jade
Height Repeat: Nil

Vyflex 134 Sky



Vyflex 116 Navy



Vyflex 203 Emerald



ASTON



Aston 823 Chablis



Aston 807 Mushroom



Aston 817 Chestnut



Aston 300 Gold



Aston 815 Buff



Aston 801 Tan



Aston 814 Espresso
Height Repeat: Nil



Aston 204 Moss



Aston 228 Bottle Green

| Vinyl Upholstery



Aston 400 Red

Aston 407 Burgundy
Height Repeat: Nil

Aston 213 Aubergine



Aston 100 Blue



Aston 905 Dove



Aston 805 Cream



Aston 116 Navy



Aston 904 Pewter



Aston 900 Black



BROOKLAND



Brookland 900 Black



Brookland 116 Navy



Brookland 624 Mulberry



Brookland 814 Espresso
Height Repeat: Nil



Brookland 407 Burgundy



Brookland 400 Red

| Vinyl Upholstery



Brookland 229 Forest



Brookland 822 Hide Green

Brookland 807 Mushroom
Height Repeat: Nil

Brookland 801 Tan



Brookland 806 Camel



Brookland 823 Chablis



Brookland 805 Cream

Vinyl Upholstery |



 panvelleTM
waterproof upholstery

panvelleTM stretchTM
waterproof upholstery

patent granted
GB 2424654 B

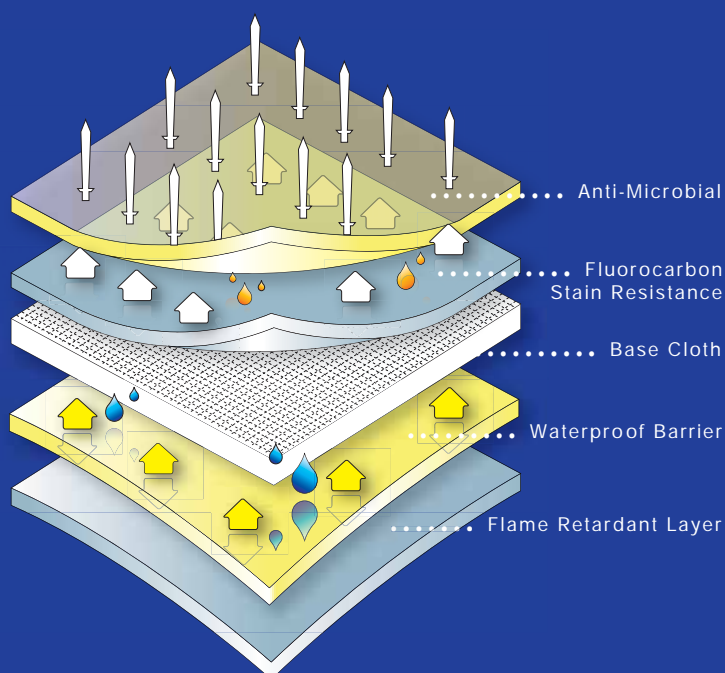
Simply call +44 (0)1282 696969

PRINTED PATTERNED & PLAIN SOFT WATERPROOF UPHOLSTERY

Panvelle™ and Panvelle Stretch™, market leading waterproof contract upholstery fabrics, are recognised by the Queen's Award for Innovation and aspired to by many.

These fabrics have unrivalled technical performance (endorsed by laboratory certification) and a vast selection of printed designs, most of which are available from stock (subject to availability).

A recent addition to this family is Panvelle Wash™. Available within 5 days (minimum order of 10 metres), Panvelle Wash offers all the features and benefits of its Panvelle partners and the extra bonus of being machine washable.



Why buy me?

Anti-microbial and anti-fungal: Panvelle™ technical excellence ensures that cross infection is reduced. Effective against even the clostridium difficile spore

Excellent colour fastness

Easy-care - cleanable with bleach solutions

Highly durable

Completely waterproof, but breathable

Flame-retardant to international contract standards

DESIGNS FEATURED:

COLOUR PALETTE / OSLO / EVA / TENBY / NOBEL STRIPE / SPIRIT / MODA / COLOURWASH / ZARA
CORELLIAN TRELLIS / MONTROSE / PALOMAR / MILAN / MONACO / PARIS / MADRID / ASTRAL LEAF



STOCKED ITEM

Panvelle Stretch Stocked Item
Subject to availability

> COLOUR PALETTE



Panvelle Stretch
226 Lime



Panvelle Stretch
201 Jade



Panvelle Stretch
129 Ocean



Panvelle Stretch
211 Spruce



Panvelle Stretch
205 Sage



Panvelle Stretch
139 Aqua



Panvelle Stretch
103 Denim



Panvelle Stretch
107 Cornflower



Panvelle Stretch
117 Royal



Panvelle Stretch
292 Racing Green



Panvelle Stretch
127 Lilac



Panvelle Stretch
703 Mink



Panvelle Stretch
906 Ash



Panvelle Stretch
902 Slate



Panvelle Stretch
105 Indigo



Panvelle Stretch
509 Plum



Panvelle Stretch
600 Pink



Panvelle Stretch
618 Blush



Panvelle Stretch
702 Chocolate



Panvelle Stretch
949 Noir



Panvelle Stretch
405 Crimson



Panvelle Stretch
429 Chilli



Panvelle Stretch
402 Orange



Panvelle Stretch
804 Fawn



Panvelle Stretch
815 Buff



Panvelle Stretch
400 Red



Panvelle Stretch
312 Old Gold



Panvelle Stretch
301 Saffron



Panvelle Stretch
313 Yellow

| Printed Patterned & Plain Soft Waterproof Upholstery

Simply call +44 (0)1282 696969



STOCKED ITEM

Panvelle and Panvelle Stretch Stocked Item

Subject to availability

OSLO



85



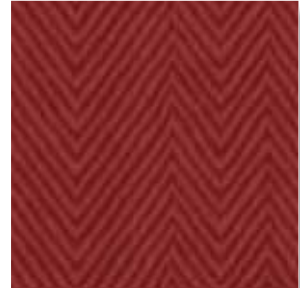
Oslo 226 Lime



Oslo 326 Hay



Oslo 408 Terracotta



Oslo 429 Chilli



Oslo 211 Spruce



Oslo 155 Duck Egg Blue



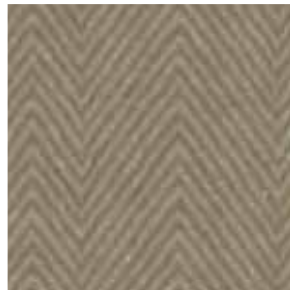
Oslo 823 Chablis



Oslo 609 Rose



Oslo 814 Espresso



Oslo 807 Mushroom



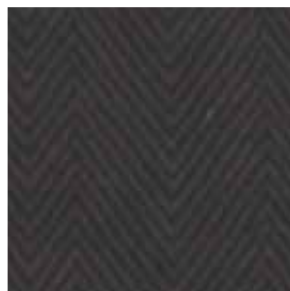
Oslo 114 Lavender



Oslo 624 Mulberry



Oslo 105 Indigo



Oslo 903 Charcoal



Oslo 197 Pigeon Grey



Oslo 837 Stone

Printed Patterned & Plain Soft Waterproof Upholstery |



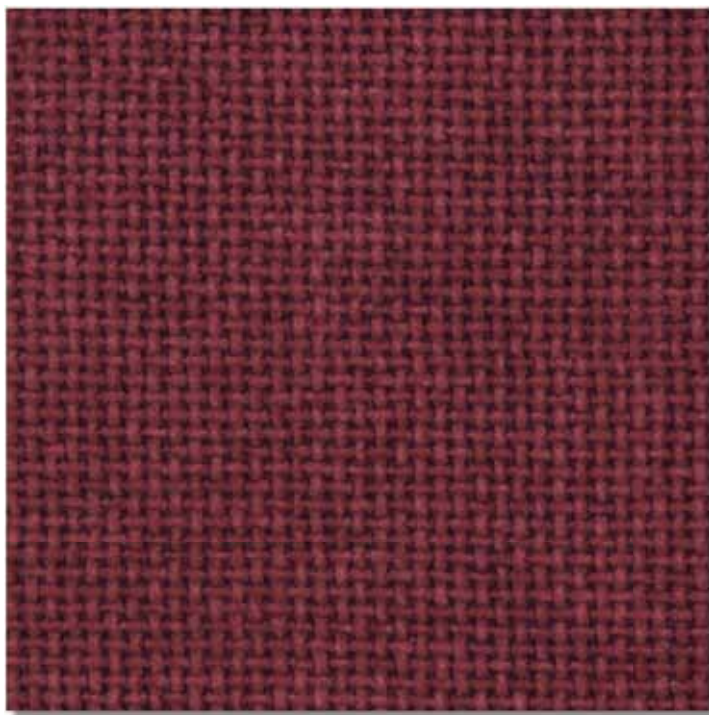
STOCKED ITEM

Panvelle and Panvelle Stretch Stocked Item
Subject to availability

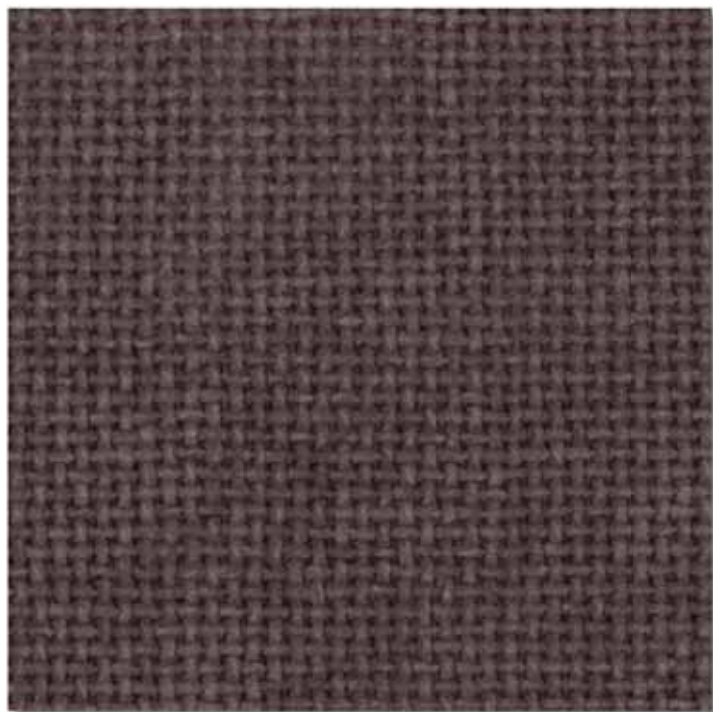
> EVA



Eva 800 Beige



Eva 414 Wine
Height Repeat: Approx Nil



Eva 702 Chocolate

| Printed Patterned & Plain Soft Waterproof Upholstery

Simply call +44 (0)1282 696969



STOCKED ITEM

Panvelle and Panvelle Stretch Stocked Item
Subject to availability

TENBY



87



Tenby 211 Spruce



Tenby 139 Aqua
Height Repeat: Nil



Tenby 127 Lilac



Tenby 201 Jade



Tenby 800 Beige



Tenby 117 Royal



Tenby 100 Blue



Tenby 105 Indigo



Tenby 624 Mulberry



Tenby 302 Sweetcorn



Tenby 408 Terracotta



Tenby 400 Red

Printed Patterned & Plain Soft Waterproof Upholstery |



STOCKED ITEM

Panvelle and Panvelle Stretch Stocked Item
Subject to availability

> NOBEL STRIPE



Nobel Stripe 100 Blue



Nobel Stripe 139 Aqua



Nobel Stripe 284 Sage / Fawn



Nobel Stripe 615 Berry
Height Repeat: Nil



Nobel Stripe 330 Golden Amber

| Printed Patterned & Plain Soft Waterproof Upholstery

Simply call +44 (0)1282 696969



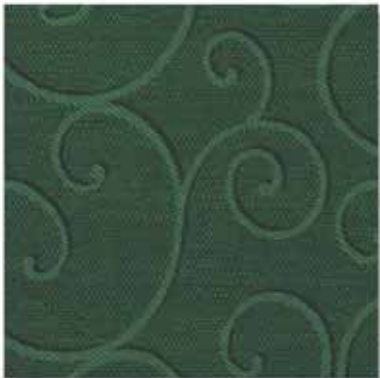
STOCKED ITEM

SPIRIT



89

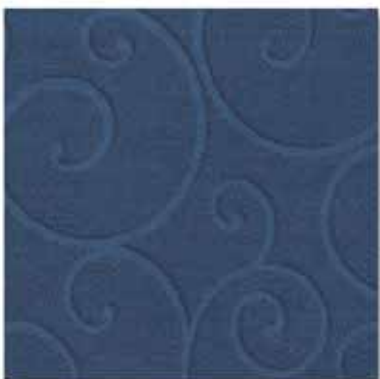
Panvelle and Panvelle Stretch Stocked Item
Subject to availability



Spirit 207 Evergreen



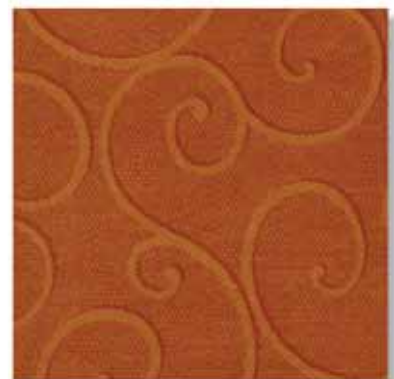
Spirit 300 Gold
Height Repeat: Approx 21.5cm (8.36")



Spirit 100 Blue



Spirit 407 Burgundy



Spirit 408 Terracotta

Printed Patterned & Plain Soft Waterproof Upholstery |



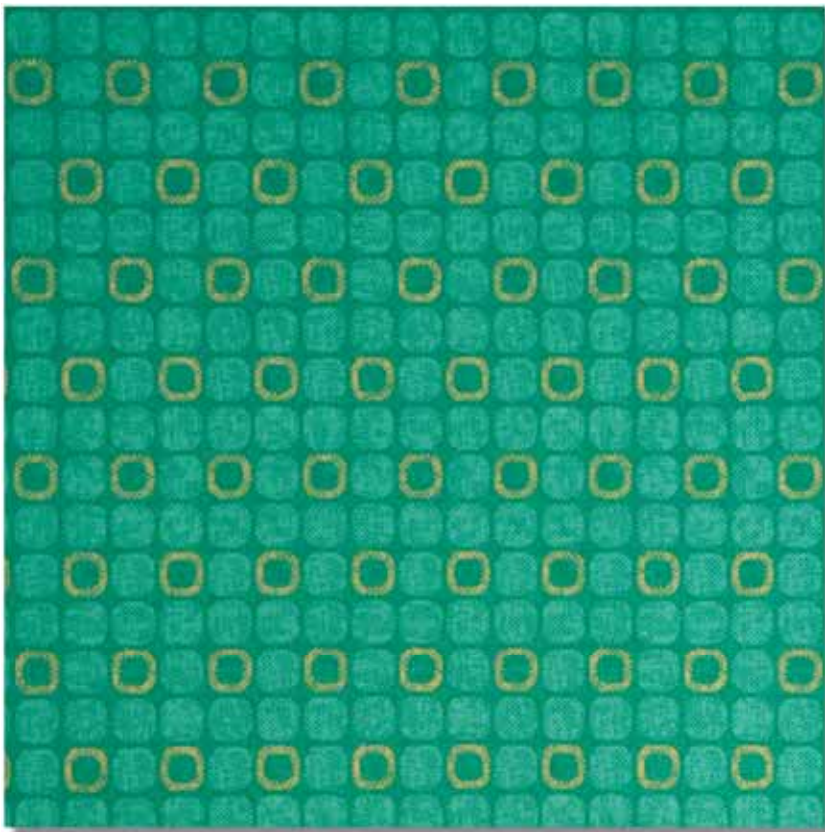
Moda 172 Blue/Lime



Moda 135 Blue/Aqua



Moda 405 Crimson



Moda 201 Jade
Height Repeat: 16cm (6.3")



Moda 483 Henna/Gold

| Printed Patterned & Plain Soft Waterproof Upholstery



STOCKED ITEM

COLOURWASH



91

Panvelle and Panvelle Stretch Stocked Item

Subject to availability



Colourwash 624 Mulberry



Colourwash 608 Fuchsia



Colourwash 207 Evergreen



Colourwash 116 Navy



Colourwash 136 Blueberry
Height Repeat: Nil

Printed Patterned & Plain Soft Waterproof Upholstery |



STOCKED ITEM



ZARA

Panvelle and Panvelle Stretch Stocked Item
Subject to availability



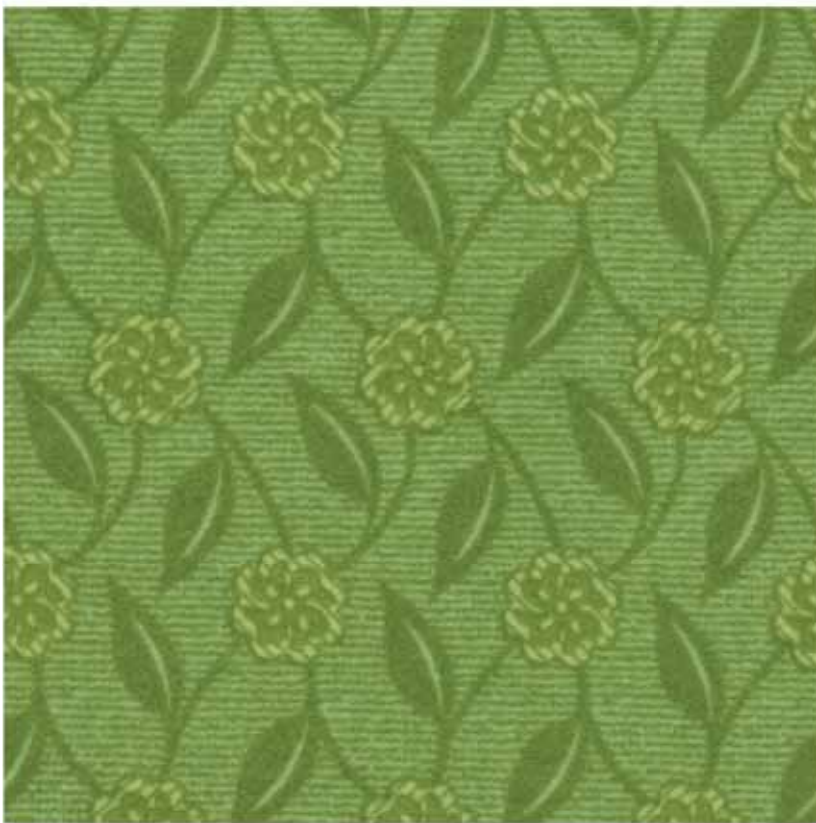
Zara 207 Evergreen



Zara 116 Navy



Zara 406 Claret



Zara 204 Moss
Height Repeat: 7cm (2.75")



Zara 609 Rose

| Printed Patterned & Plain Soft Waterproof Upholstery

Simply call +44 (0)1282 696969



STOCKED ITEM

CORELLIAN TRELLIS <

93

Panvelle and Panvelle Stretch Stocked Item

Subject to availability



Corellian Trellis 608 Fuchsia



Corellian Trellis 405 Crimson



Corellian Trellis 155 Duck Egg Blue
Height Repeat: Approx 3.5cm (1.37")



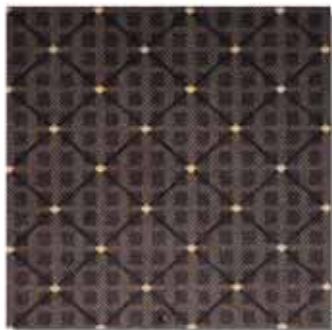
Corellian Trellis 404 Henna



Corellian Trellis 300 Gold



Corellian Trellis 800 Beige



Corellian Trellis 814 Espresso



Corellian Trellis 205 Sage Green

Printed Patterned & Plain Soft Waterproof Upholstery |



STOCKED ITEM

> MONTROSE

Panvelle and Panvelle Stretch Stocked Item
Subject to availability



Montrose 116 Navy



Montrose 407 Burgundy



Montrose 207 Evergreen



Montrose 205 Sage Green



Montrose 611 Dusty Pink



Montrose 204 Moss
Height Repeat: Approx 9cm (3.5")



Montrose 408 Terracotta



Montrose 300 Gold

| Printed Patterned & Plain Soft Waterproof Upholstery

Simply call +44 (0)1282 696969



STOCKED ITEM

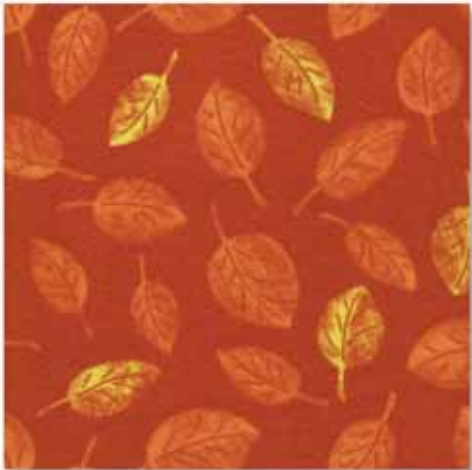
PALOMAR



95

Panvelle and Panvelle Stretch Stocked Item

Subject to availability



Palomar 404 Henna

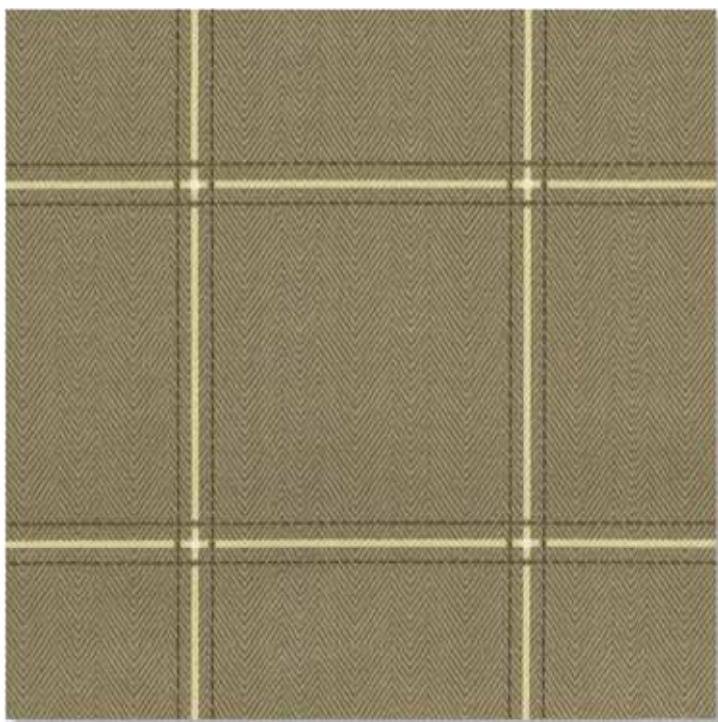


Palomar 139 Sapphire/Aqua
Height Repeat: Approx 13cm (5.5")



Palomar 405 Crimson

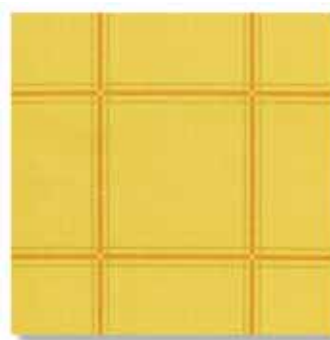
Printed Patterned & Plain Soft Waterproof Upholstery |



Milan 807 Mushroom
Height Repeat: Approx 11.4cm (4.5")



Milan 429 Chilli



Milan 326 Hay



Milan 158 Duck Egg/Cream



Milan 179 Pigeon Grey



Milan 823 Chablis



Milan 170 Blue/Brown



Milan 624 Mulberry



Milan 724 Chocolate/Mocha

| Printed Patterned & Plain Soft Waterproof Upholstery



Monaco 624 Mulberry



Monaco 995 Black/Chalk



Monaco 429 Chilli



Monaco 158 Duck Egg/Cream



Monaco 103 Denim



Monaco 288 Teal/Espresso



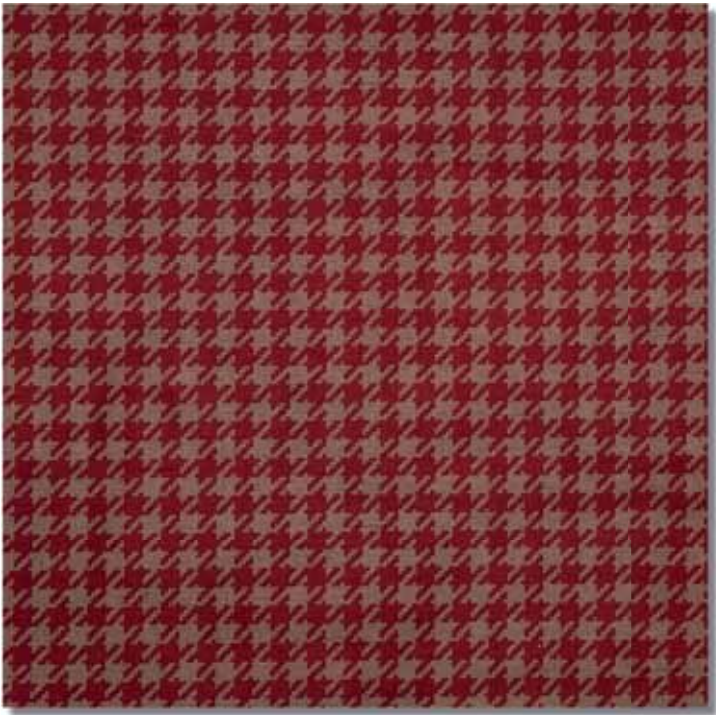
Monaco 807 Mushroom



Monaco 852 Beige/Cream

Monaco 279 Lime/Mocha
Height Repeat: Approx 68.5cm (27")

Printed Patterned & Plain Soft Waterproof Upholstery |



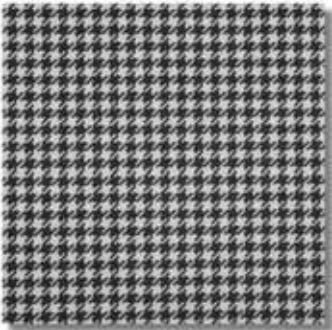
Paris 471 Red/Mocha
Height Repeat: Approx 22.8cm (9")



Paris 852 Beige/Cream



Paris 804 Fawn



Paris 995 Black/Chalk



Paris 679 Mulberry/Mocha



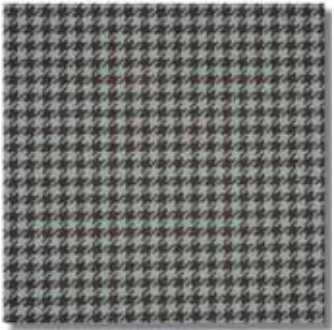
Paris 279 Lime/Mocha



Paris 191 Indigo/Fawn



Paris 288 Teal/Espresso



Paris 855 Espresso/Grey

| Printed Patterned & Plain Soft Waterproof Upholstery



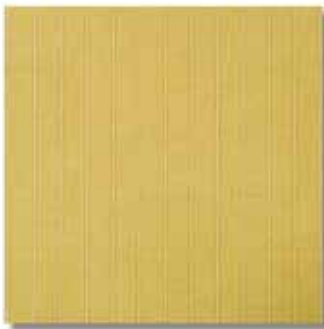
Madrid 800 Beige



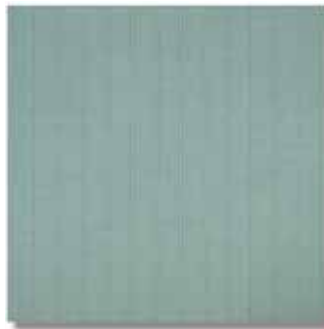
Madrid 226 Lime



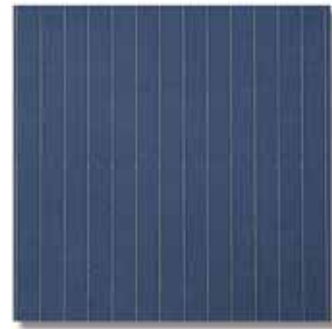
Madrid 903 Charcoal



Madrid 321 Wheat



Madrid 155 Duck Egg



Madrid 103 Denim



Madrid 408 Terracotta



Madrid 814 Espresso

Madrid 624 Mulberry
Height Repeat: Approx 22.8cm (9")

Printed Patterned & Plain Soft Waterproof Upholstery |



Astral Leaf 404 Henna
Height Repeat: Approx 21cm (8.26")



Astral Leaf 624 Mulberry



Astral Leaf 129 Ocean



Astral Leaf 102 Light Blue

| Printed Patterned & Plain Soft Waterproof Upholstery



WOVEN WATERPROOF UPHOLSTERY

Why buy me?

- Flame retardant
- Anti-microbial/anti-fungal
- Waterproof
- Stain resistant
- Stirling rating 1, 2 or 3
- Woven appearance
- High durability

DESIGNS FEATURED:

MOORLAND / HIGHLAND / MONTREAL / QUEBEC / ONTARIO / HAZE / DOMINO / SUNDIAL

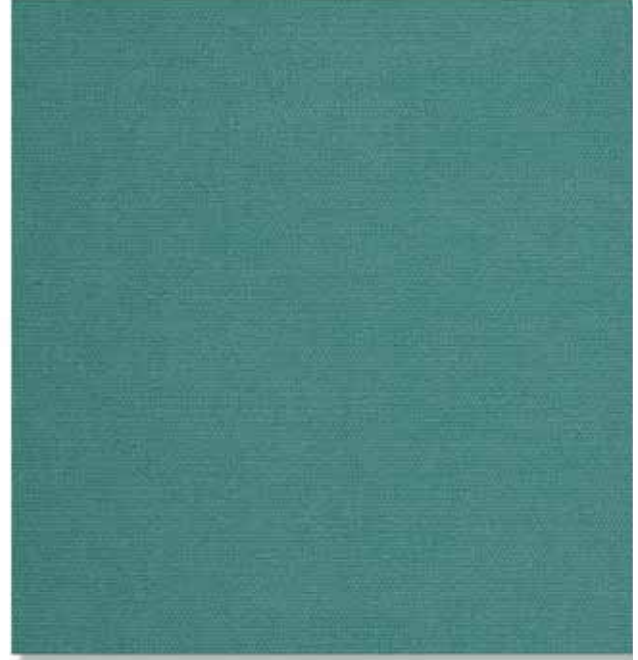




Simply call +44 (0)1282 696969



Moorland 127 Lilac

Moorland 139 Aqua
Height Repeat: Nil

Moorland 133 Sapphire



Moorland 702 Chocolate



Moorland 407 Burgundy



Moorland 618 Blush



Moorland 408 Terracotta



Moorland 823 Chablis



Moorland 301 Saffron



Moorland 252 Willow

Woven Waterproof Upholstery |



Highland 609 Rose



Highland 405 Crimson



Highland 116 Navy



Highland 624 Mulberry



Highland 817 Chestnut



Highland 703 Mink

Highland 642 Thistle
Height Repeat: Nil

| Woven Waterproof Upholstery



Highland 911 Steel



Highland 134 Sky

Highland 131 Azure
Height Repeat: Nil

Highland 321 Wheat



Highland 807 Mushroom



Highland 841 Biscotti



Highland 836 Sand



Highland 823 Chablis



Highland 231 Olive

Woven Waterproof Upholstery |

> MONTREAL



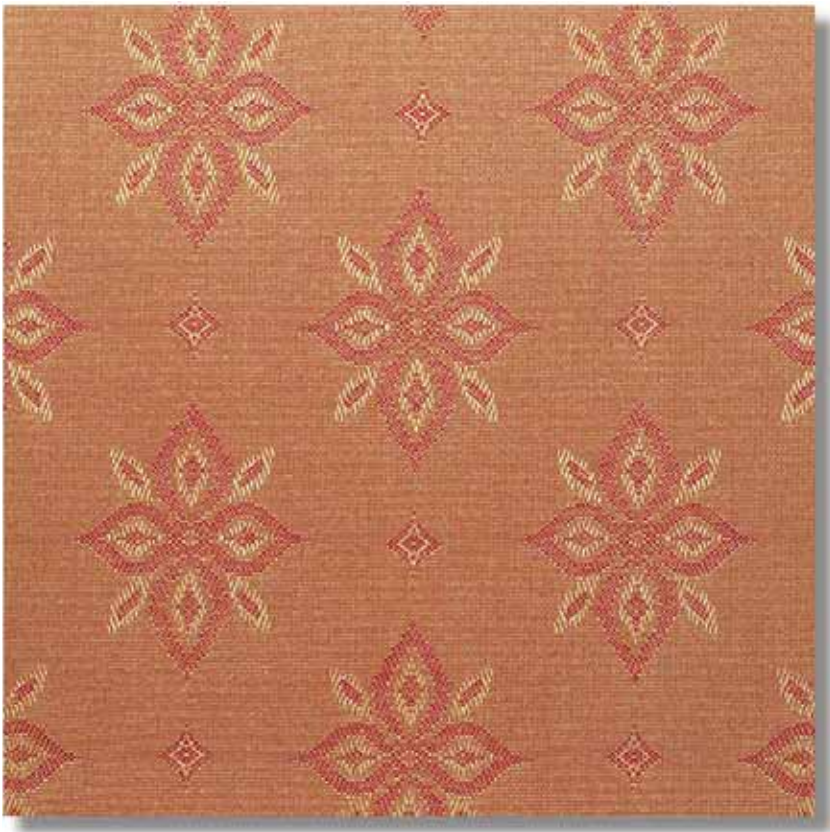
Montreal 407 Burgundy



Montreal 408 Terracotta



Montreal 310 Gold/Blue



Montreal 301 Saffron
Height Repeat: Approx 9cm (3.5")



Montreal 117 Royal



Montreal 200 Green

| Woven Waterproof Upholstery

Co-ordinating designs | Montreal | Quebec | Ontario

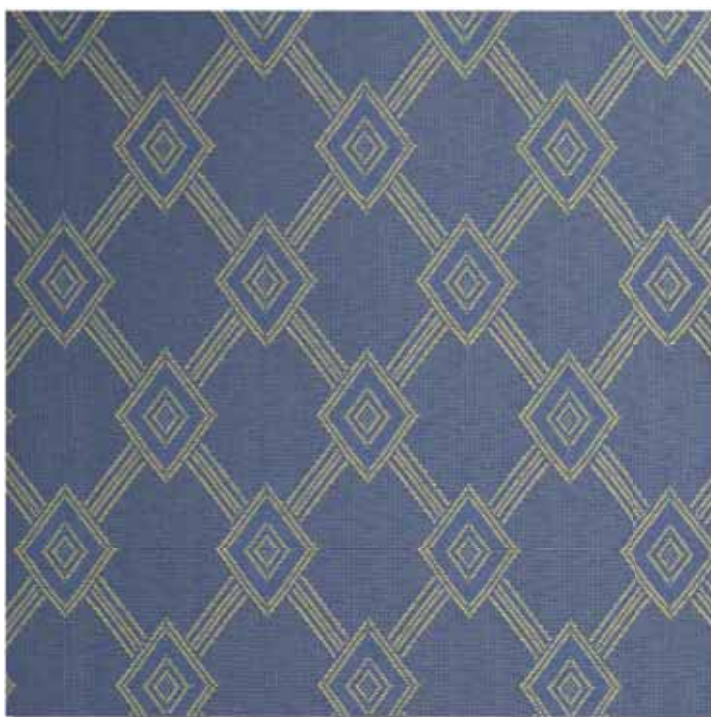
Simply call +44 (0)1282 696969



Quebec 313 Yellow



Quebec 117 Royal



Quebec 100 Blue
Height Repeat: Approx 6.5cm (2.5")



Quebec 211 Spruce



Quebec 231 Olive



Quebec 408 Terracotta



Quebec 405 Crimson

Woven Waterproof Upholstery |

Co-ordinating designs | Montreal | Quebec | Ontario



ONTARIO



Ontario 405 Crimson



Ontario 404 Henna



Ontario 204 Moss



Ontario 304 Maize
Height Repeat: Approx 17.5cm (7")



Ontario 100 Blue

| Woven Waterproof Upholstery

Co-ordinating designs | Montreal | Quebec | Ontario

Simply call +44 (0)1282 696969



Haze 702 Chocolate



Haze 643 Mulberry/Gold



Haze 135 Blue /Aqua
Height Repeat: Approx 22.4cm (9")



Haze 430 Red/Gold



Haze 408 Terracotta



Haze 834 Honey



Haze 201 Jade

Woven Waterproof Upholstery |

Co-ordinating designs | Haze | Domino | Sundial



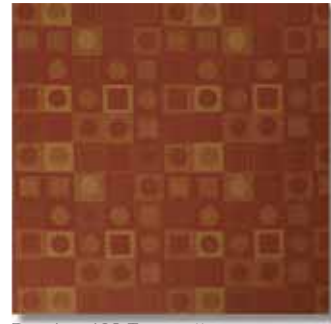
DOMINO



Domino 643 Mulberry/Gold



Domino 430 Red/Gold



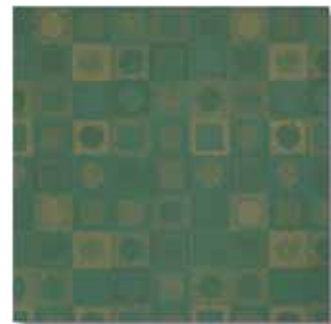
Domino 408 Terracotta



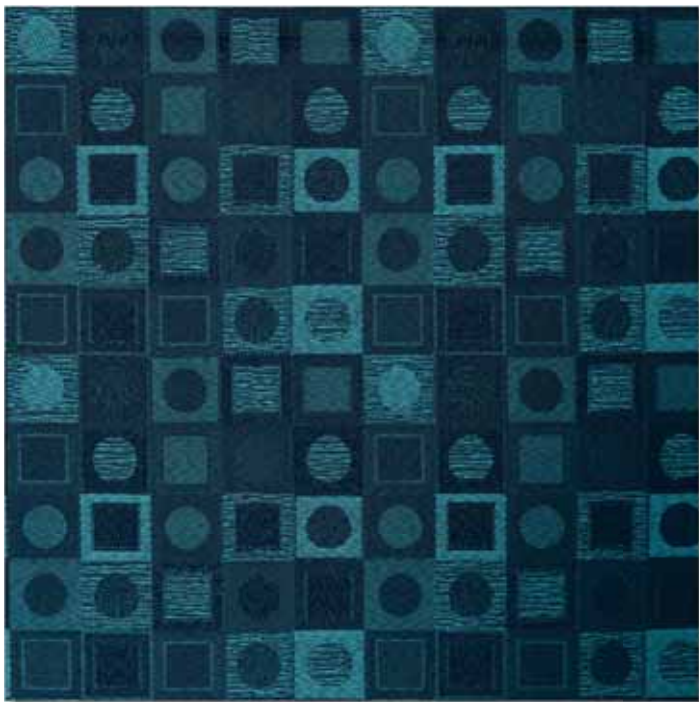
Domino 702 Chocolate



Domino 834 Honey



Domino 201 Jade



Domino 135 Blue/Aqua
Height Repeat: Approx 18.5cm (7.5")

| Woven Waterproof Upholstery

Co-ordinating designs | Haze | Domino | Sundial

Simply call +44 (0)1282 696969



Sundial 702 Chocolate



Sundial 643 Mulberry/Gold



Sundial 135 Blue/Aqua
Height Repeat: Approx 22.4cm (9")



Sundial 430 Red/Gold



Sundial 408 Terracotta



Sundial 834 Honey



Sundial 201 Jade

Woven Waterproof Upholstery |

Co-ordinating designs | Haze | Domino | Sundial

PANAZ CUSTOM DESIGN SERVICE

The Panaz design studio is a dedicated professional studio that has outstanding creative and technical skills available to develop exceptional creative solutions for special projects.

Using advanced computerized sampling facilities the studio can take a brief and develop a new design within days to provide an individual and bespoke service for a major hospital or educational development.

CASE STUDY : Queen Alexandra Hospital, Portsmouth, England.

The redevelopment of the Queen Alexander Hospital Portsmouth was a tremendous opportunity for the Panaz Studio to work with the Trust, the architects and the developer to provide uniquely designed cubicle curtains, drapery for windows and shower curtains.

Taking a brief from BDP Winchester, the Panaz design studio developed the theme for an exclusive cubicle curtain drapery panel to feature throughout the hospital with colour co-ordinated window curtains, blinds and shower curtains. The vision was to reflect the essence of Portsmouth in a collage of lively images. After careful consideration and working closely with all stakeholders, the result was a rainbow of vibrant colours with playful picture-book impressions of the seaside, sea-life, beach huts, sailing boats, kites, sand and sunshine.

As illustrated below, the draperies are lively, welcoming and friendly, creating a truly optimistic hospital environment in which to recover. Designs are unique to Portsmouth hospital.

In order to provide a complete package, the Panaz curtain making department also made up and installed all of the program working closely with the main contractor Carillion. ***Cost effective, on time and in budget.***



RECENTLY COMPLETED PROJECTS

British Pregnancy Advisory Service	Barnet Enfield and Haringey NHS Trust	Great Yarmouth and Waveney PCT
Cotswold Care Hospice	Oxleas NHS Foundation Trust	Kent and Medway NHS and Social Care Partnership Trust
Doncaster Hospice	Queen Alexandra Hospital, Portsmouth	Central and North West London NHS Foundation Trust
Ashmere Care Group	John Radcliffe Hospital, Oxford	Fareham Community Hospital
Extra Care	Oxford Radcliffe NHS Trust	Samuel Johnson Community Hospital, Staffordshire
Blythe House Hospice	University College Hospital, London	Edgware Community Hospital
Derbyshire County Council	Chase Farm Hospital, Enfield	BMI Clementine Churchill Hospital, Harrow
Birmingham City Council	Lister Hospital, Stevenage	Hospital for St John and St Elizabeth, London
Stoke City Council	Barnet General Hospital	Priory Group
Hanover Housing Association	Royal Free Hospital, London	Clare College, Cambridge
North Staffordshire NHS Trust	Royal Brompton Hospital	University College, London
Plymouth NHS Trust	Harefield Hospital	Loughborough University
Avon And Wiltshire Mental Health Trust	Hillingdon Hospital, Middlesex	Imperial College London
University Of Warwick	Mount Vernon Hospital, Middlesex	University of Kent, Canterbury
Hywel DDA NHS Trust	Royal Bournemouth Hospital	London South Bank University
Shaw Healthcare	Christchurch Hospital	Excel Care Holdings
Extra Care Gloucester	Royal Marsden Hospital	Partnerships in Care
Ramsay (Winfield Medical Centre) Healthcare Gloucester	Sussex Partnership NHS Foundation Trust	Yarrow Housing
Nottinghamshire NHS Trust Rampton Hospital	Hampshire Partnership NHS Trust	Hallmark Healthcare
Bucknall Hospital Staffordshire NHS Trust	Great Western NHS Foundation Trust, Swindon.	Lifestyle Care
Gloucestershire Council The Vron	Great Yarmouth and Waveney PCT	Carebas
Stoke Hospital North Staffordshire NHS Trust	Moorfields Eye Hospital NHS Foundation Trust	
Cambian Healthcare	Chelsea and Westminster Hospital NHS Foundation Trust.	
	Care UK	



DESIGNING FOR DEMENTIA CARE ENVIRONMENTS

Undoubtedly fabrics play a major part in any care environment, impacting on mood, sense of well being, security and comfort. Ensuring that fabric selections reflect the residents' interests, gender and stage of life is important as it helps to reinforce personal identity, enhancing self esteem and confidence. People need to feel comfortable in their own home and fabrics are one very visible element contributing to achieving this.

Designing for dementia care presents important considerations and concerns that can often provoke a too safe and conservative approach to the scheme in terms of colour and design. The considered approach is beneficial but the over cautious or unimaginative design may not produce the most therapeutic or nurturing environments for the individual. Under-stimulation is as detrimental as over-stimulation in these environments.

In the pursuit to offer guidance and advice on fabric selections to our clients in this area of work, we sought assistance from The Dementia Services Development Centre at Stirling University and we were delighted to work with them to establish guidelines on the use of fabrics when designing for dementia care.

We have developed a series of guidelines to form a general framework of advice which still allows for the individual and personal touch. As with many design features in a dementia-friendly environment, what is fine for one person may not be the case for another. Individual needs and preferences should be considered. Hence, rather than trying to identify what may be right or wrong in a pattern, it may be more helpful to list features to be mindful of. Our guidelines do just that.

Panaz recognises that people with dementia are very individual in regard to their likes, dislikes, concerns and worries and in the things that comfort them. All of our designs reflect this understanding.



GUIDELINES OF KEY FEATURES TO CONSIDER

COLOUR

The normal ageing process produces sensory losses such as visual impairment. This is of particular concern for those with Alzheimer's disease or other dementias as they may not be able to understand why and therefore be unable to compensate for it.

The elderly gradually lose the ability to discriminate between colours and this is exaggerated with dementia, so the use of contrasting colours within design is vital. Contrast seating with carpets, bedspreads and flooring, door handles from doors, light switches from walls, etc. Pale colours together (or a mass of dark shades) are often difficult to discern by the visually impaired. Look to add texture and semi-plains to create interest and, most importantly, select fabrics for seating which clearly contrast in colour and shade with carpet colours to ensure that seating is clearly visible.

Perception of colour is personal so consider the possible connotations such as political affiliation, football team colours, superstition and water.

People with dementia often remember their distant past more readily than recent events. Most particularly this would mean the years of young adulthood when they were first setting up home, becoming independent and making their own decisions and way in the world. This inevitably flavours their perception of the present. For example, whilst red is often avoided by designers for dementia care, a Manchester United supporter will regard red as a welcoming and comforting colour.

LIGHT

Lighting is paramount, particularly daylight which is natural and diffuses easily. Ensure that drapes are designed not to overlap the actual window and can be pulled right back to allow in as much light as possible.

DEFINE 'EDGES'

Simple things like contrasting piping on the edge of seating, on bedspreads at the edge of the bed or on the edge of draperies where they are pulled to and drawn back, all assist in making life easier and less troublesome.

DESIGN

Alzheimer's disease and other dementias can significantly change how people interpret what they see. Boldly defined stripes or designs with a vertical bias may be interpreted as bars or grills.

MOVEMENT

Swirling or sinuous patterns may cause some queasiness, especially if the person is taking anti-psychotic medication.

AGE/ GENERATION APPROPRIATENESS

Often colourful and detailed, retro patterns of the 50's and 60's may be appreciated by the elderly.

SMALL GEOMETRICS OR FLECKS

These can look like something has been spilled or needing to be swept up or picked off.

FLOWERS/ LEAVES

Patterns of flowers and leaves which are to any extent realistic are not helpful because they may be mistaken for the real thing. Abstract or stylised designs of organic items generally work better.

STIRLING RATING

Together, Stirling Dementia Centre and Panaz have conducted a review of Panaz Fabrics and have rated their usability in an easy to use matrix which offers guidance. (see key at the bottom of facing page)

Design	Stirling Rating
Printed Patterned Curtains, Bedding & Accessories	
Angles	●
Axis	●
Benedetto Print	●
Blendworth Scroll	● ●
Bramante Print	●
Broughton	●
Capital Stripe	●
Carnival	●
Cherish	● ●
Coastline	N/A
Colony	●
Elegant Leaf	● ●
Escape	● ●
Essence Print	● ● ●
Festivity	N/A
Fiesta	● ● ●
Folia	● ●
Harewood	●
Harlington	●
Jitterbug	●
Linden Stripe	●
Madrid	● ● ●
Milan	● ● ●
Monaco	● ●
Mosaic	●
Playtime	N/A
Plaza	● ●
Poplar	●
Quadrant	● ●
Salsa	● ●
Sealife	N/A

Design	Stirling Rating
Printed Patterned Curtains, Bedding & Accessories	
Sierra	● ● ●
Sekino	●
Sento	●
Suburbia	● ●
Swing	● ●
Tango Stripe	●
Textured Check	● ●
Tilia	●
Toro	● ●
Twist	●
Utamaro	●
Valencia Scroll	●
Valencia Stripe	●
Verano	● ● ●

Design	Stirling Rating
Printed Semi Plain Curtains, Bedding & Accessories	
Aura	● ● ●
Oslo	● ● ●
Essence Print	● ● ●
Edo	● ● ●
Silverstone	● ● ●



Design	Stirling Rating
Printed & Plain Soft Waterproof Upholstery	
Astral Leaf	● ●
Colour Palette	● ● ●
Colourwash	● ● ●
Corellian Trellis	● ● ●
Eva	● ● ●
Madrid	● ● ●
Milan	● ● ●
Moda	● ●
Monaco	● ●
Montrose	● ● ●
Nobel Stripe	●
Oslo	● ● ●
Palomar	● ●
Paris	● ● ●
Spirit	● ●
Tenby	● ● ●
Zara	● ●

Design	Stirling Rating
Woven Upholstery	
Domino	● ●
Haze	● ●
Highland	● ● ●
Montreal	● ● ●
Moorland	● ● ●
Ontario	● ● ●
Quebec	● ●
Sundial	● ●

Design	Stirling Rating
Vinyl Upholstery	
Amathus	● ● ●
Aston	● ● ●
Brookland	● ● ●
Quattro	● ● ●
Trek	● ● ●
Venture	● ● ●
Vogue	● ● ●
Voyage	● ● ●
Vyflex	● ● ●
Zest	● ●

Key	
Stirling Rating	
● ● ●	Fabrics within this rating are plain or semi plain and can be used indiscriminately for draperies, bedspreads, upholstery, etc. That said, bear in mind the need to contrast upholstery and bedspreads with carpets. Contrast is the key word. Simultaneously, when selecting a colour, consider the lighting in the room and select something that can be plainly seen in that environment.
● ●	Within this rating are fabrics which, in general, should not provoke any upset or concern. It is important to use these to add interest and stimulus to a room design but be aware of a possible reaction in some people, particularly if on anti-psychotic drugs.
●	This rating incorporates flowers, stripes and colourful design – all the elements which make a room interesting and welcoming. These CAN be used, but with caution and limitations. Try using these for small accessories such as cushions and bottom of bed runners. Another idea is to produce double sided runners with a plain or semi- plain to the rear. Should they cause an adverse reaction they can be turned over or removed and used elsewhere.

Reducing Routes to Infection: Healthcare's Urgent Challenge

Over the past two decades, **Hospital Acquired Infection (HAI)** has presented a significant challenge.

The impact that such infections have on patient safety, their health and well being brings distress to both themselves and their families, not to mention the Healthcare professionals caring for them. This burden to human welfare is compounded by the financial cost to the NHS in terms of service delivery. Such costs are not isolated to the hospital alone but to the extended network of Healthcare services with prolonged inpatient stay, further treatments, outpatient consultations and subsequent visits to GPs and community care.

It is a disturbing statistic that approximately 5,000 people die each year in the UK from directly attributable HAI, and in a further 15,000 cases it is considered a substantial contributor.

It is known that the routes to infection are multiple and diverse and it is difficult to quantify the role of the environment in the transfer of infection. Some report that 19% of contamination may be attributable to the environment, others as much as 40%. The greatest risk for patients is contamination in their immediate vicinity such as bed rails, lockers, curtains, bedding and upholstery.

Panaz is acutely aware of HAI
and this is why we have developed...





shieldtmplus

curtain and bedding fabrics are the latest addition to the Panaz anti-microbial armoury. Shield Plus is a high quality, 100% flame retardant polyester fabric treated with a revolutionary technology,

powered by
Devan

mædical+

providing optimal and enduring anti-microbial protection for fabrics.

mædicalTM is a unique, non-leaching and non-silver anti-microbial which has been proved effective against the broadest spectrum of bacteria, including the clostridium difficile spore and is resilient to the harshest laundry protocols whilst remaining bonded and durable for the life of the fabric.

Exclusive to Panaz, mædicalTM has been tested for effectiveness by **L' Institut Pasteur de Lille** under an EU-funded programme; FLEXIFUNBAR contract n° 505864 IP-SME-FP6.



Not all anti-microbials are created equal nor do they work the same

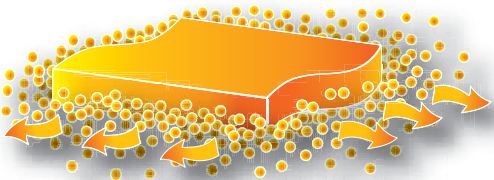
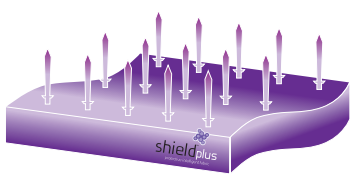
Previous reticence to adopting anti-microbial draperies in some hospitals can be attributed to concerns that the anti-microbial would deplete in the process of working. This could result in adaptive organisms and ultimately immunity to the agent.

This is understandable as the vast majority of anti-microbials work by migrating (or leaching) from the surface they are applied to. These conventional leaching types of anti-microbials leave the textile and chemically enter or react with the micro-organism, essentially acting as a poison. There is no doubt that they can be initially effective but they are used up and depleted in the process of working.

The effective alternative from Panaz employs a non-migrating (non-leaching) anti-microbial protection that acts on the physical structure of the cell by piercing the cell wall. This anti-microbial does not migrate from the protected drapery and remains bonded and durable for the life of the fabric.

Products employing migrating technologies include: BioCote, Cliniweave, See it Safe, BioActive and Enduracide which is used in many disposable curtains.

Mode of Action

For Migrating	For Non Migrating
 <ul style="list-style-type: none"> • Anti-microbial migrates from the substrate to the bacteria • Is used up and depleted in the process of working • Causes adaptive cells • Creates a resistance and immunity to the agent • Does not kill on contact 	 <ul style="list-style-type: none"> • Anti-microbial acts by a mechanical process which attracts the bacteria and stabs the cell wall and electrocutes the biochemicals within • Does not migrate or deplete • Does not cause adaptive cells • Does not create immunity to the agent • Kills bacteria on contact • Remains effective for the life of the product

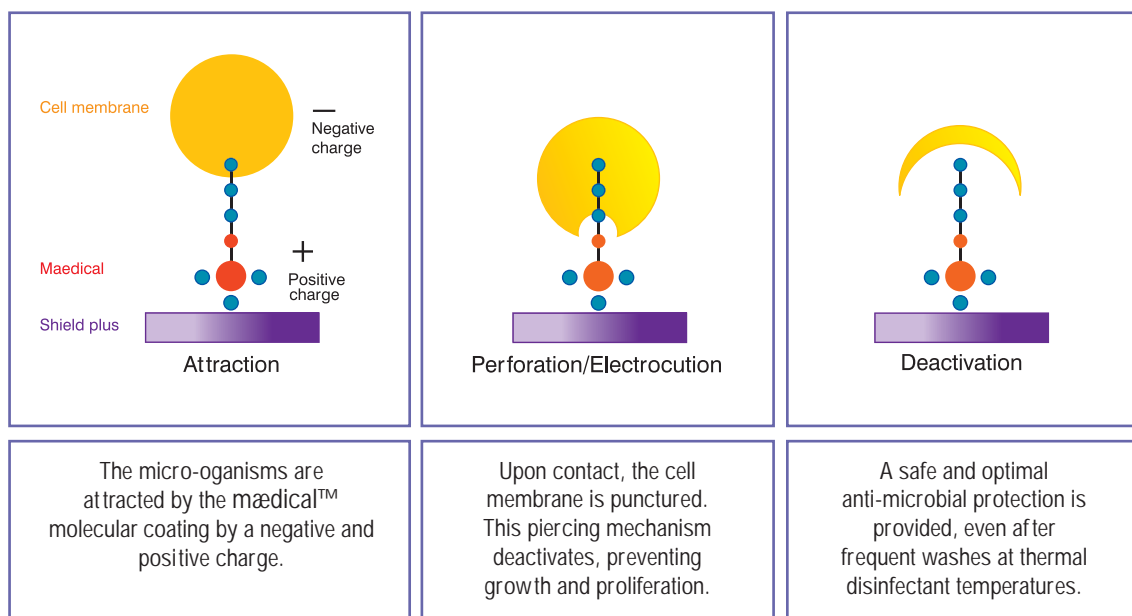


The shield^{plus} solution

protective intelligent fabric

Non-migrating / Non-leaching anti-microbials

Shield Plus employs a non-migrating technology. This technology, mædical™, is based upon the permanent application of a non-migrating molecular coating onto the fabric fibres. This coating destroys bacteria on contact. It is permanently bonded to the textile and does not act by 'poisoning' the microbe but, on a molecular scale, physically stabs the membrane and electrocutes the biochemicals within it.



powered by
mædical+ Devan

anti-microbial tested at the renowned **L'Institut Pasteur de Lille** is not merely fixed to the fabric; it is chemically bonded making it a permanent part of the surface and allowing it to remain functional even after long-term use and repeated laundry cycles at thermal disinfectant temperatures.



CARE & MAINTENANCE OF YOUR SOFT TEXTILE UPHOLSTERY

Clean and care for your upholstery on a regular basis and it will maintain its condition and appearance.



Panvelle, Panvelle Wash & Panvelle Stretch



Panatex 1 & Panatex 2



Highland



Moorland

Clean and Simple!

1. Vacuum and wipe clean regularly with a microfibre cloth and water to remove dust particles and prevent build up of soiling.
2. Remove spillages promptly with an absorbent dry cloth.
3. If heavier soiling has been allowed to accumulate, try using water only first, then use a mild liquid soap, ensuring that cleaning products are removed, as they inhibit the stain repellent. Take care not to cause abrasive damage.
4. Wipe off bodily fluids promptly (within 15 minutes) with cold water and then clean as above.
5. For extreme soiling/infection control purposes, use a 5% sodium hypochlorite (bleach) solution, Haz Tabs or Chlor-Clean.
6. Steam cleaning is permitted for infection control purposes, in accordance with the manufacturer's guidelines.

NB: Steam cleaning is an effective sanitizer (as are Haz Tabs and Chlorclean) but is not a good cleaner. Cleaning with a microfibre cloth and water is more effective. Steam and heat from steam cleaners actually seal in oily residues from bodily fluids, etc.

7. Do not machine wash (except Panvelle Wash), fully immerse, dry clean or apply other chemicals.
8. Microfibre cleaning cloths are extremely effective even without soap, which is helpful as soap residues can clog the fibre making it difficult to clean. Tests conducted by Satra Laboratories showed that a microfibre cloth and water alone were just as effective in removing marks and stains as using proprietary cleaner.



CARE & MAINTENANCE OF YOUR VINYL UPHOLSTERY

Clean and care for your upholstery on a regular basis and it will maintain its condition and appearance.



Aston



Brookland



Vyflex



Cadet Zest, Classic & Contemporary

Clean and Simple!

1. Vacuum and wipe clean regularly with a damp microfibre cloth and water to remove dust particles and prevent build up of soiling.
2. Remove spillages promptly with an absorbent dry cloth.
3. For general soiling, use a soft brush/microfibre cloth taking care to avoid abrasive damage to surface and use tepid soapy water (non-alkaline). Rinse clean with water and dry with an absorbent cloth.
4. Bodily fluids should be removed promptly (within 15 minutes) with cold water and then cleaned as above.
5. For extreme soiling/infection control purposes use a 5% sodium hypochlorite (bleach) solution, Haz Tabs or Chor-Clean.
6. Steam cleaning is an effective sanitizer (as are Haz Tabs and Chlorclean) but is not a good cleaner. Cleaning with a microfibre cloth and water is more effective. Steam and heat from steam cleaners actually seal in oily residues from bodily fluids, etc.

If steam cleaning is essential, use infrequently for emergency infection control purposes only and in accordance with the machine manufacturer's recommendations. As we are unable to comment on the variety of machines in the marketplace or on the operator's handling, care should be taken for the sake of both the upholstery fabric and the wooden frame and we are unable to guarantee these.
7. Do not machine wash or dry clean.
8. Do not use furniture polish, stain remover or solvents.



OUR ENVIRONMENTAL RESPONSIBILITY

Panaz contract furnishing fabrics may often be described as 'out of this world' in terms of design appeal, but the company maintains a very down to earth approach to its production and management processes, with formal environmental and sustainability policies applied across every aspect of the our operations.



Since Panaz was established in 1985, our whole philosophy on the environment and the impact we have on it has been at the forefront of our thinking. It is one of the main drivers we have when considering corporate policy on all that we do.

Within the company's eco manifesto, general policy statements stress that concern for the environment be an integral and fundamental part of the Panaz business strategy and emphasise the corporate aim of reducing the environmental impact of the company's manufacturing activities.

The need to engage with all employees in the fulfilment of this aim and to encourage suppliers and customers alike to adopt sound environmental policies is also articulated. Such statements are not bland declarations of intent: they are backed up with practical supporting measures implemented across the company's entire process.

In 1985, our first decision was to use dry printing methods that were revolutionary at the time. Dispensing with the need for water during our print processes was new thinking that has since become the norm for our Industry.

No chemical treatments are required to achieve international FR properties for draperies – our collections have always been based on the use of inherent FR yarns – those collections using Trevira CS also qualify for Oeko Tex certification.

